



# The Power of Error Proofing

Accurate. Reliable. Durable.  
**TOOLS YOU TRUST.**



**Sturtevant  
Richmont**

# Torque Application Solutions

## Table of Contents



### Wireless

#### Controllers

<b>Connected Power Tools</b> .....	4
<b>Global 400 Series Torque Controller System</b> .....	7
<b>Global 400mp Series Multi-Port Torque Controller System</b> .....	8
<b>TCV e2 Programmable Torque Verifier Ethernet 2</b> .....	9

#### Wireless Torque and Angle Tools

<b>Exacta 1350 TD Series Radio Equipped Digital Torque and Angle Screwdriver</b> .....	10
<b>TAC (Torque Angle Control) FM 2.4 GHz Preset Wireless Click Wrench</b> .....	11
<b>1350 Series Exacta® 2 Interchangeable Head Digital Torque and Angle Wrench</b> .....	13
<b>1250 Series Exacta® 2 Digital Torque &amp; Angle Wrench</b> .....	14

#### Other connected tools and accessories

<b>HT Series Holding Tool Technology Wrenches</b> .....	16
<b>1200 Series Exacta® 2 Digital Torque Wrench</b> .....	17
<b>SLTC-FM Series SLTC FM 2.4 GHz Preset Wireless Click Wrench</b> .....	18
<b>SLTC Series Hardwired Click Wrench</b> .....	19
<b>GIM400 Global Input/Output Multiplier</b> .....	20
<b>GSM400 Global Bar Code Scanner Manager</b> .....	20
<b>TCV-FM 2.4 GHz Torque Control Verifier</b> .....	20

### ISO is the Cornerstone of Error Proofing

Sturtevant Richmond was one of the early adopters of ISO 9001 and ISO 17025. As the American representative on the working committees that write the ISO standards, our focus is reproducible results, worldwide, through process control.

**ISO 9002 Registered August 19, 1994 | ISO 9001 Registered May 8, 2001 | ISO 17025 Accredited October 23, 2003**



**Sturtevant  
Richmont**

555 Kimberly Drive, Carol Stream, IL 60188 USA

Worldwide +1 (847) 455-8677

U.S. Toll-free: +1 (800) 877-1347

Fax: +1 (847) 455-0347

Email: customerservice@srtorque.com



## Interchangeable Heads

### Ratchet Style

<b>SDRF</b> Fine-tooth Ratchet .....	22
<b>SDRT</b> Square Drive Ratchet .....	23
Small Ratchet with Larger Drive Size .....	23
Socket Lock Pin .....	23
Hold & Drive Square Drive Ratchet .....	23
<b>Ratchet Renewal Kits</b> .....	23

### Wrench Style Heads

<b>OE</b> Open End .....	24
<b>ROE</b> Ratcheting Open End .....	26
<b>BH</b> Box Head .....	27
<b>FN</b> Flare Nut .....	28

### Drive Style

<b>HD</b> Hex Drive .....	29
<b>SD</b> Square Drive .....	29

### Specialty and Adapters

Crowfoot Adapter .....	29
<b>RFN</b> Ratcheting Flare Nut .....	30
<b>LTCE Series</b> and <b>LTCE-15 Series</b> : Straight and 15 Degree Angled Extension .....	30
<b>STA</b> Standard Tooling Adapters .....	31
<b>Adapters for DIN Style Heads</b> .....	31
<b>Adapters for Round Style Heads</b> .....	31

## Torque Application Tools

### Wrenches

<b>DTC</b> Interchangeable Head Digital Torque and Angle Wrench .....	33
<b>DTC Connect</b> Freeware P-Set and Result Software .....	34
<b>Exacta 2</b> Bi-directional Interchangeable Head Digital Torque and Angle Wrench .....	35
<b>CCM Series</b> Interchangeable Head Micrometer Adjustable .....	36
<b>SDR Series</b> Square Drive Ratchet Micrometer Adjustable .....	37
<b>SD Series</b> Square Drive Micrometer Adjustable .....	38
<b>LTC Series</b> Interchangeable Head Preset .....	39
<b>LTCR Series</b> Square Drive Ratchet Preset .....	40
<b>LTCS Series</b> Square Drive Preset .....	41
<b>BLT Series</b> Bidirectional Interchangeable Head Preset .....	42
<b>M Series</b> Flat Beam Torque Wrench .....	43
<b>IDW Series</b> Industrial Dial Torque Wrench .....	45



### Screwdrivers

<b>P Series</b> Preset Screwdriver .....	46
<b>CAL 36/4 Series</b> Micrometer Adjustable Torque Screwdriver .....	47
<b>ExacTorq®</b> Micrometer Adjustable Torque Screwdriver .....	48
<b>TD Series</b> Digital Screwdriver .....	49
<b>PM Series</b> Preset Screwdriver .....	50



## Torque Testers

<b>System 8</b> Digital Torque Testers .....	52
<b>TT, TT-QC, TT-L Series</b> Static Transducers .....	54
<b>Torq-Tronics 2®</b> Digital Torque Tester .....	56
<b>Veritorq® 2</b> .....	58
<b>RDF Series</b> Rundown Fixtures .....	59
<b>TTM 4.0</b> Torque Tool Manager Calibration and Certification Software .....	59
Mechanical Loaders and Accessories .....	60



# Angled Nut Runner

## Connected Power Tools

- Brushless Motor - energy saving, higher efficiency and longer lasting
- 4 power tools can operate simultaneously when used with a Global 400MP
- Simple torque setting procedure
- Clutch operation reduces reaction force on operator
- Indicators on tool providing OK/NOK status with red or green LED
- Double hit detection via measurement of fastener rotation
- Lightweight with Li-Ion compact battery
- Battery life indicator on the battery module
- Audible alerts to auto shut-off when torque reaches the set value
- Low maintenance costs due to long service life
- Can only be used with Global 400's and Global 400MP's
- All torque and rotation measurements are programmable using the Global 400, Global 400MP or Global Manager Software
- Accuracy of +/- 10%
- Adjustment tool included

### WARNING



- Do not exceed rated torque
- Do not use to break fasteners loose
- Periodic recalibration is necessary to maintain accuracy
- Read safety precautions on page 61



Adjustment Tool



Kits include  
2 batteries and  
charger



Part No.	SR Model	Description	Capacity (Nm)	Speed (RPM)	Drive
SRT12043	2100PTA-45	20V Angled Nut Runner Tool, 45 Nm, Kit	18 to 45	210 to 300	3/8" SD
SRT12045	2100PTA-90	20V Angled Nut Runner Tool, 90 Nm, Kit	40 to 90	100	1/2" SD
SRT12043EU	2100PTA-45EU	20V Angled Nut Runner Tool, 45 Nm, Kit	18 to 45	210 to 300	3/8" SD
SRT12045EU	2100PTA-90EU	20V Angled Nut Runner Tool, 90 Nm, Kit	40 to 90	100	1/2" SD
SRT12038	2000PTB	20V A4.0Ah Battery Pack	N/A	N/A	N/A
SRT12039	2000PTC	20V Battery Charger, US	N/A	N/A	N/A
SRT12039EU	2000PTC-EU	20V Battery Charger, EU	N/A	N/A	N/A



# Brushless Driver

## Connected Power Tools

- Brushless Motor - energy saving, higher efficiency and longer lasting
- 4 power tools can operate simultaneously when used with a Global 400MP
- Simple torque setting procedure
- Clutch operation reduces reaction force on operator
- Indicators on tool providing OK/NOK status with red or green LED
- Double hit detection via measurement of fastener rotation
- Lightweight with Li-Ion compact battery
- Battery life indicator on the battery module
- Audible alerts to auto shut-off when torque reaches the set value
- Low maintenance costs due to long service life
- Can only be used with Global 400's and Global 400MP's
- All torque and rotation measurements are programmable using the Global 400, Global 400MP or Global Manager Software
- Accuracy of +/- 10%
- Adjustment tool included



Adjustment Tool

### WARNING



- Do not exceed rated torque
- Do not use to break fasteners loose
- Periodic recalibration is necessary to maintain accuracy
- Read safety precautions on page 61



Kits include 2 batteries and charger



Part No.	SR Model	Description	Capacity (Nm)	Speed (RPM)	Drive
SRT12048	2100PTP-12	20V Brushless Driver, 12 Nm, Kit	3 to 12	700-1000	1/4" Hex
SRT12048EU	2100PTP-12EU	20V Brushless Driver, 12 Nm, Kit	3 to 12	700-1000	1/4" Hex
SRT12038	2000PTB	20V A4.0Ah Battery Pack	N/A	N/A	N/A
SRT12039	2000PTC	20V Battery Charger, US	N/A	N/A	N/A
SRT12039EU	2000PTC-EU	20V Battery Charger, EU	N/A	N/A	N/A



# Transducer Tool

## Connected Power Tools

- Ability to accommodate multiple torque and angle values
- 4 power tools can operate simultaneously when used with Global 400MP
- Multiple speed strategy to ergonomically assist the operator
- Communicates in clockwise and counter clockwise
- Can only be used with Global 400's and Global 400MP's
- All torque and angle measurements are programmable using the Global 400, Global 400MP or Global Manager Software
- Accuracy of +/- 10%
- Side handle tool included
- Clear view of target value of the tightening on display
- Good or bad result as value hit with OK/NOK on OLED display
- Good or bad fastening indication on LED display
- Battery life indicator on the battery module



**Side handle  
tool included**

### **WARNING**



- Do not exceed rated torque
- Do not use to break fasteners loose
- Periodic recalibration is necessary to maintain accuracy
- Read safety precautions on page 61



**Kits include  
2 batteries and  
charger**



Part No.	SR Model	Description	Capacity (Nm)	Speed (RPM)	Drive
SRT12052	2100PTP-18	Transducerized 20V Wireless Precision Tool, 18 Nm, Kit	3 to 18	50 to 800	¼" SD
SRT12053	2100PTP-24	Transducerized 20V Wireless Precision Tool, 24 Nm, Kit	6 to 24	50 to 600	¼" SD
SRT12052EU	2100PTP-18EU	Transducerized 20V Wireless Precision Tool, 18 Nm, Kit	3 to 18	50 to 800	¼" SD
SRT12053EU	2100PTP-24EU	Transducerized 20V Wireless Precision Tool, 24 Nm, Kit	6 to 24	50 to 600	¼" SD
SRT12038	2000PTB	20V A4.0Ah Battery Pack	N/A	N/A	N/A
SRT12039	2000PTC	20V Battery Charger, US	N/A	N/A	N/A
SRT12039EU	2000PTC-EU	20V Battery Charger, EU	N/A	N/A	N/A

Torque Controller System

# Global 400 Series



## Mixed Model Manufacturing Mandates Flexibility:

We specialize in solving the most complex assembly challenges. The Global 400 is designed to organize work stations where highly customized products are assembled. It can work with 16 primary torque tools, 8 holding tools, and an additional 8 I/O tools. It has the capacity for 200 sets of parameters that can be grouped allowing 4 operators to work as a team. These parameters or groups can be formed into jobs containing a fixed build sequence of up to 35 steps.

## Mixed Model Manufacturing Mandates Communication:

The Global 400 communicates with the operators, the tools, and your network in multiple ways. Parameters or jobs can be assigned via the Ethernet or by the operator via a bar code scanner. Tools can be selected or programmed wirelessly, while the controller displays the required work to the operator. As the operator works through their task, the tools and controller provide auditory, tactile, and visual guidance. The tools provide the controller with immediate notification of operator results. The controller stores up to 10,000 results in on-board memory, and automatically updates your production system via multiple protocols. No production interruptions!



## System Capabilities:

- Six inch diagonal, back-lit, color LCD display
- 2-RJ-45 Ethernet ports allow for chain, or ring network communication.
- USB-A connector for use with bar code scanner, or updating firmware, and saving files.
- RS-232 DB-9 Connector for use with serial bar code scanner or serial printer.
- Ten pin I/O connector providing discrete I/O capabilities.
- Five pin connector for additional I/O capabilities with the use of a GIM400.
- Power Supply 100-240 VAC at 50-60 Hz.
- Key switch for programming access. 21-function keys for programming.
- Programmable beeper for audio communication.
- Order Part No. 10474 cable for 10 pin I/O

**Protocols:** EtherNet IP, Open Protocol, ToolsNet, Profinet, PFCS, Toyota

**Software:** SR Global Manager (Included) optional SR GlobalHost reporting software (Part No. 10622)

**Order Global 400, Part No. 10497**

**Enhance your controller with our GIM400 Global Input/Output Multiplier, part number 10611.**



## Multi-Port Torque Controller System

# Global 400mp Series

## The mp Takes You To The Next Level:

The Global 400mp distributes all the power, flexibility, ease and capabilities of the Global 400 over four (4) individual network interfaces. The result? Up to four (4) operators can work independently and don't even have to be in the same work cell.

Four separate network interfaces and Global 400mp architecture eliminate the need for groups in order to support simultaneous work.

Parameters are formed directly into jobs. With 4 network interfaces each operator can work on their own job, independent of the other operators.

The Global 400mp can be applied to assembly, repair, and maintenance operations.

The Global 400mp works with up to 16 torque tools, 8 holding tools and 8 I/O tools divided among the 4 network interfaces.



## System Capabilities:

- Six inch diagonal, back-lit, color LCD display
- 2-RJ-45 Ethernet ports allow for chain, or ring network communication.
- USB-A connector for use with bar code scanner, or updating firmware, and saving files.
- RS-232 DB-9 connector for use with serial bar code scanner or serial printer.
- Ten pin I/O connector providing discrete I/O capabilities.
- Five pin connector for additional I/O capabilities with the use of a GIM400.
- Power Supply 100-240 VAC at 50-60 Hz.
- Key switch for programming access. 21-function keys for programming.
- Programmable beeper for audio communication.
- Order Part No. 10474 cable for 10 pin I/O

**Protocols:** EtherNet IP, Open Protocol, ToolsNet, Profinet, PFCS, Toyota

**Software:** SR Global Manager (Included) optional SR GlobalHost reporting software (Part No. 10622)

**Order Global 400mp, Part No. 10612**



**WARNING**



- Do not exceed rated torque
- Do not use to break fasteners loose
- Periodic recalibration is necessary to maintain accuracy
- Read safety precautions on page 61



Two Controllers in One!

# TCV e<sup>2</sup>

## Programmable Torque Verifier Ethernet

In 1999 we helped build the wireless error proofing industry on the back of the I/O driven TCV Controller. It was one box and one tool. Driven by a PLC, the TCV was great for controlling a process and verifying that the work was done.

The TCV was fast and it was simple. It worked with a click wrench and there was no reporting. For many applications that was the perfect approach.

Fast-forward twenty years and we are expanding the TCV by introducing the TCV e2. (TCV Ethernet 2) The Ethernet connection gives you an MES connection capability.

### Key TCV e2 Features:

- Two independent channels so two operators work independently.
- Functions with the new TAC digital torque and angle click wrench as well as the legendary SLTC FM 2.4 GHz click wrench.
- General I/O, network, or bar code driven
- Functions with 2 bar code readers
- **Protocols:** EtherNet IP, Open Protocol, ToolsNet, Profinet, PFCS, Toyota
- Learn in up to 10 tools
- Comes with 2 separate 24 VDC I/O ports. Why pay extra for this?
- Complete interface with SR Global Manager software for setting parameters, etc.
- Reports into Global Host or ToolsNet.



The TCV e2 doesn't sacrifice a bit of the speed by working with our new TAC, the Digital Torque and Angle click wrench. and our SLTC FM 2.4 GHz click wrench. All the production speed is retained and two operators can work simultaneously.

If you have an indexing line, and torque control matters, you need the TCV e2 and radio equipped tools.

**Order the TCV-e2 FM 2.4 GHz using part number 10676.**

**To learn more about how the TCV e2 can error proof your assembly processes, go to [srtorque.com](http://srtorque.com) or contact your local Sturtevant Richmond sales professional.**



Torque & Angle

# Exacta 1350 TD Series

## Radio Equipped Digital Torque & Angle Screwdriver

- Compatible with the Global 400 and Global 400mp torque controllers.
- All torque and angle settings are set using the Global 400 or Global 400mp. Error proofing feature: parameters cannot be set using the buttons on the torque screwdriver.
- XBee radio 2.4 GHz - 12 channels
- Modes of operation: Peak, TAM, T2A, Residual
- Meets/exceeds ASME B107.300-2010 and ISO 6789
- Bi-directional +/- 2% Indicated Value from 5% to 100% of tool capacity.
- The display back light is visible when torque is applied. Displays the torque and angle value on the digital display on the screwdriver.
- Visible from any angle, light band on the driver turns yellow, then green, the driver beeps, and the handle vibrates when target torque is achieved.
- Female hexagon versions as well as male square drive version gives you flexibility to meet all of your torque driver application needs.
- ESD Compliant when grounding strap is properly worn.
- Powered by 1 AA NiMH battery (two included with driver).
- Compatible with NiMH batteries only.
- Units of measure: in-oz, in-lb, ft-lb, cNm, NM, cmkg
- CE and ROHS compliant



Comes with blow molded case.



**Optional L-Grip handle for use with 80 in. lb. models**

### Exacta 1350 TD Series Radio Equipped Digital Torque & Angle Screwdriver

Part No.	Model	Torque Capacity	Overall Length	Weight w/ battery	Drive Style
10770	EXACTA 1350 TD (Torque Driver)	4-80 in lb	7.5 in	8 oz	Fem. Hex
10771	EXACTA 1350 TDM (Torque Driver)	4-80 in lb	7.5 in	8 oz	Male Sq. Dr.
10772	EXACTA 1350 TD (Torque Driver)	5-100 in oz	7.5 in	8 oz	Fem. Hex

### Accessories

10740	4-Slot Battery Charger
10741	8-Slot Battery Charger
10769	L-Grip Handle (for use with 80 in. lb. models)
21964	AA NiMH Rechargeable Battery

### WARNING



- Do not exceed rated torque
- Do not use to break fasteners loose
- Periodic recalibration is necessary to maintain accuracy

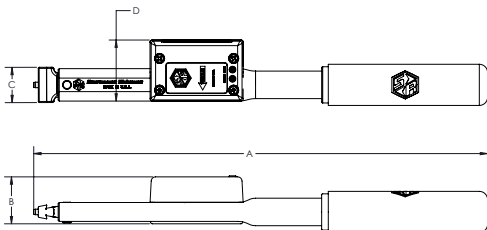
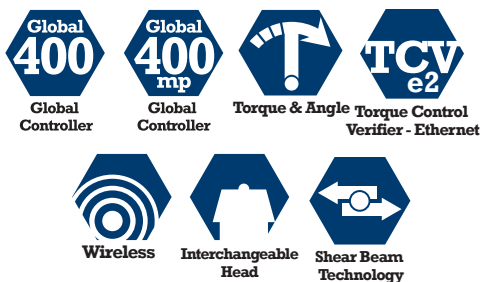


Features distinctive, durable blue powdercoat finish.

## TAC FM 2.4 GHz Preset Wireless Click Wrench

# TAC

(Torque/Angle Control)



- The speed and access of a click wrench with the accuracy of torque and angle applications. Operator sees OK/NOK LED and the reporting documents date/time stamped attribute data including degree of rotation (angle measurements.)
  - Fully compatible traceable torque and angle results with the Global 400, Global 400mp and the all-new TCV-e2.
  - Supports simultaneous operation in the Global 400 and TCV-e2 application. Use with Global 400mp for independent tool operation.
  - Works with the patented Holding Tool in the Global 400/400mp.
  - Torque accuracy of +/- 4% or better of preset value from 20% to 100% of capacity meets or exceeds requirements of ASME B107.300-2010 and ISO 6789. Angle accuracy to within 1°.
  - Equipped with 2 LEDs on the radio case.
  - Access to over 200 SR interchangeable heads.
  - Audible/tactile pulse when preset torque is achieved.
  - Powered by one AAA NiMH rechargeable battery. Shipped with 2 NiMH rechargeable, recyclable batteries. Charger sold separately.
  - Error Proofing By Guidance: Provides "OK/NOK" LED on the radio case on the wrench.
    - When P-Set is activated Blue LED indicates selected tool.
    - Differentiating sounds for acceptance tone/reject beep comes from the controller
    - Orange flashing LED: Low battery warning light
- Using NiMH AAA with the largest mAh rating you can find will extend time between battery changes.

Part No.	Model	Torque Capacity*	Head	A (in.)	B (in.)	C (in.)	D (in.)	Weight (lbs.)
810712	TAC-150I	30-150 in lb / 3.4-17 Nm	Dovetail	6.98	0.75	1.33	1.73	2.6900
810713	TAC-300I	60-300 in lb / 6.8-34 Nm	Dovetail	8.92	0.75	1.33	1.73	2.9363
810714	TAC-750I	150-750 in lb / 17-85 Nm	Dovetail	12.74	1	1.33	1.73	3.6106
810715	TAC-1800I	360-1800 in lb / 40.8-204 Nm	Dovetail	16.18	1.25	1.33	1.73	3.9878
810721	TAC-1800I ERGO	360-1800 in lb / 40.8-204 Nm	Dovetail	20.56	1.25	1.33	1.73	4.4911
10740	4-Slot Battery Charger							
10741	8-Slot Battery Charger							
21970	AAA NiMH Battery							

### WARNING



- Do not exceed rated torque
- Do not use to break fasteners loose
- Periodic recalibration is necessary to maintain accuracy
- See safety precautions at [sr torque.com](http://sr torque.com)

# Changing Operator Behavior by Behavior Modification

A click wrench is designed to click at a preset point. An operator should stop pulling when the wrench clicks.

This ensures the proper torque is applied. If operators don't stop pulling when the wrench clicks, the applied torque continues to increase. The question becomes "How much additional torque was applied?"

That additional torque remains unmeasured. Until now!

The TAC wrench quickly and easily solves this long-standing challenge.

In addition the wrench reports the degrees of angle rotation for the fastener.

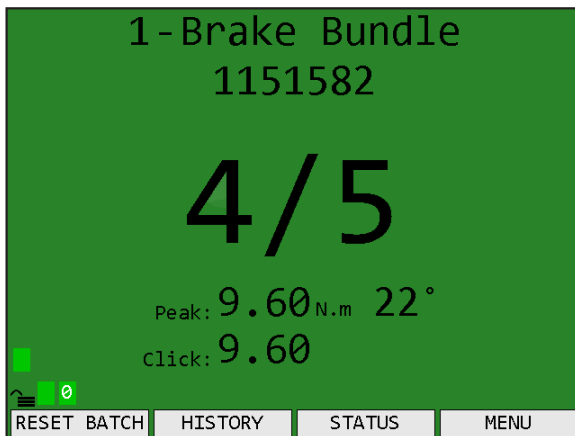
The click torque, peak torque and the degrees of rotation are all displayed on the Global 400/400mp screen and in the reporting. Now a supervisor has actionable data that can be used to train the operator. There is now a trackable basis for error proofing by guidance (using light, sound, and tactile stimulation) as well as historical data to change behavior, which is error proofing by behavior modification.

## Torque and Angle Measurement Terms:

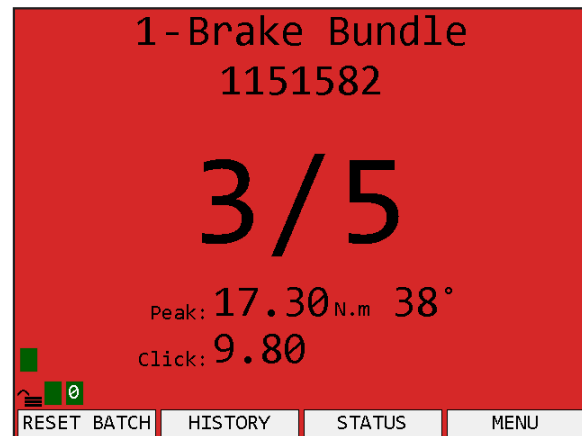
**Click:** Reads where the wrench clicks

**Peak:** Reads the highest applied torque value

**Torque and Angle Monitoring (TAM):** Quickly identifies "double hit" on fasteners. Identifies changing joint conditions for hydraulic connections. Shows both applied torque value and degrees of rotation. Minimum and maximum angle settings are customizable.



*In this application the operator stopped pulling when the wrench clicked. The fastener was not over-torqued, and this correct torque operation is displayed and tracked here.*



*With this fastener the operator continued to pull long after the wrench clicked.*

*The G400 would consider this to be a reject. Now supervisors have concrete evidence to help improve performance and shape behavior*

### WARNING



- Do not exceed rated torque
- Do not use to break fasteners loose
- Periodic recalibration is necessary to maintain accuracy
- See safety precautions at [srtorque.com](http://srtorque.com)



Comes with blow molded case.



Interchangeable Head Digital Torque and Angle Wrench

# 1350 SERIES EXACTA<sup>®</sup> 2

- Compatible with the Global 400 and Global 400mp torque controllers
- A slimmer version of our 1250 Series Exacta 2 digital torque and angle wrench. It shares the Shear Beam design transducer.
- Meets/exceeds ASME B107.300-2010 and ISO 6789
- Bi-directional +/- 2% Indicated Value from 20% to 100% of tool capacity
- All torque and angle settings are set using the Global 400 or Global 400mp. Error proofing feature: parameters cannot be set using the buttons on the wrench.
- The display backlight is visible when torque is applied.
- Visible from any angle, light bands on both sides of the wrench turn yellow, then green, the wrench beeps, and the handle vibrates when target torque is achieved.
- Traditional pin/spring Dovetail or Quick Change Dovetail gives you access to over 200 interchangeable heads
- Torque units: in.lb., ft.lb., Nm, cNm, cmkg
- All 1350 Series Exacta 2 Wrenches include 2 NiMH AA batteries

### Four Modes of Torque and Angle Operation:

- TAM (torque and angle monitoring – double hit protection and identifies changing joint conditions)
- T2A (torque to angle – for highly engineered assemblies)
- Residual (measures existing torque on previously tightened fasteners)
- Peak (all torque, no angle measurement)

### WARNING



- Do not exceed rated torque
- Do not use to break fasteners loose
- Periodic recalibration is necessary to maintain accuracy
- See safety precautions at [srtorque.com](http://srtorque.com)

Part No.	Model	Torque Capacity	Overall Length	Weight without head	Head Options
10980	1350 Series EXACTA 2-5 AA	12-60 in lb / 1.34-6.7 Nm	13.13 in	1.29 lb	200+ Heads
10981	1350 Series EXACTA 2-25 AA	60-300 in lb / 6.78-33.9 Nm	14.88 in	1.45 lb	200+ Heads
10982	1350 Series EXACTA 2-75 AA	180-900 in lb / 20.34-101.7 Nm	16.5 in	1.60 lb	200+ Heads
10983	1350 Series EXACTA 2-150 AA	160-1800 in lb / 40.6-203 Nm	19.75 in	1.86 lb	200+ Heads
10984	1350 Series EXACTA 2-250 AA	600-3000 in lb / 67.78-338.9 Nm	27.68 in	2.51 lb	200+ Heads
10986	1350 Series EXACTA 2-5 AAQC	12-60 in lb / 1.34-6.7 Nm	13.13 in	1.29 lb	200+ Heads
10987	1350 Series EXACTA 2-25 AAQC	60-300 in lb / 6.78-33.9 Nm	14.88 in	1.45 lb	200+ Heads
10988	1350 Series EXACTA 2-75 AAQC	180-900 in lb / 20.34-101.7 Nm	16.5 in	1.60 lb	200+ Heads
10989	1350 Series EXACTA 2-150 AAQC	360-1800 in lb / 40.6-203 Nm	19.75 in	1.86 lb	200+ Heads
10990	1350 Series EXACTA 2-250 AAQC	600-3000 in lb / 67.78-338.9 Nm	27.68 in	2.51 lb	200+ Heads
10712	SR Connect (radio interface for tool calibration)				

Accessories	
10740	4-Slot Battery Charger
10741	8-Slot Battery Charger
21964	AA NiMH Rechargeable Battery

Wrenches calibrated for use with heads having 1 7/16" (36.5mm) common centerline. On request wrenches can be calibrated for 3 7/8" (98.4mm) centerline. The 1350 Series Exacta 2 can change the common centerline head length in the software setting and not have to recalibrate the tool. NiMH Batteries rated 800 mAh to 1000 mAh are acceptable. Higher mAh ratings mean more cycles between recharge and longer recharge times.



**Comes with  
blow molded  
case.**



# 1250 SERIES EXACTA® 2

## Digital Torque & Angle Wrench

- Bi-directional +/- 1% Indicated Value from 20% to 100% of tool capacity.
- Meets/Exceeds the ASME and ISO standards.
- Angle measurements include: Torque To Angle, Torque With Angle Monitoring, Residual Torque, Prevailing Torque Mode.
- Also operates in Peak Mode with no angle measurements
- Included with the 1250 Series wrenches are two single cartridge batteries and charger. One battery can be charging while the other is in use.
- Vibrating handle when the target torque and angle values are reached.
- Programmable wrench display "lighting sequence" works with both torque and angle. Within the engineering specifications, a target can be set to acknowledge target achieved feedback with display color change and handle vibration.
- Up to four tools can operate simultaneously with the Global 400/400mp.
- Robust radio communication speeds support the shortest takt times.
- Operator can complete active P-Set even if radio communication is severed. When radio communication resumes, the wrench automatically uploads all missed P-Set data.
- The wrench automatically recalibrates for P-Sets requiring different head lengths.
- Wrenches are available with our traditional fixed ratchet, pin/spring dovetail, optional quick change (QC) dovetail with access to well over 200 interchangeable heads

### Compatible Products

Fully compatible with Global 400 and Global 400mp controller where multiple tools with simultaneous uses are needed. The 1250 Series Exacta 2 does not communicate with the Global 8, PTV or TCV.

### Why Torque and Angle?

Torque with angle measurement provides a significantly more accurate and repeatable clamp load from one assembly to the next.

### Traceability and Digital Data Capture

Provides digital date/time stamped documentation on every fastening achieved with our wireless tools.

**The 1250 Series measures torque in:  
cNm, Nm, cmkg, In lb, and ft lb**

## Five Operational Modes:

### Torque to Angle: T2A

Measures torque first and then degrees of fastener rotation to stretch the fastener a predetermined amount. That closely managed bolt stretch creates greater repeatability than using torque alone.

### Torque with Angle Monitoring: TAM

Measures torque while ensuring sufficient rotation. Helps identify “double-tightened” fasteners and changing joint conditions.

### Prevailing Torque Mode: PTM

Factors out friction inherent to lock nuts.

### Residual: RES

Audit torque value on previously tightened fasteners with greater accuracy.

### Peak

Pure torque measurement without angle measurement.

## 1250 Series Exacta 2 Digital Torque and Angle Wrenches

Part No.	Model Designation	Torque Capacity FT LB	Torque Capacity Nm	Head Style	Overall Length (in.)	Weight (lbs.)	Weight (kgs)
10652	1250 Series Exacta 2-25	25 ft lb	33.90	Dovetail	14.36	2.192	0.994
10653	1250 Series Exacta 2-75	75 ft lb	101.69	Dovetail	17.66	2.340	1.061
10654	1250 Series Exacta 2-150	150 ft lb	203.37	Dovetail	19.73	2.500	1.134
10659	1250 Series Exacta 2-250	250 ft lb	338.95	Dovetail	23.10	2.790	1.266
10655	1250 Series Exacta 2-250 R	250 ft lb	338.95	1/2" SD Ratchet	23.64	3.530	1.601
10656*	1250 Series Exacta 2-400	400 ft lb	542.32	Dovetail	35.24	8.200	3.719
10671	1250 Series Exacta 2-400 R	400 ft lb	542.32	3/4" SD Ratchet	38.28	9.120	4.137
10657	1250 Series Exacta 2-600 R	600 ft lb	813.48	3/4" SD Ratchet	59.20	12.480	5.661
10666	1250 Series Exacta 2-25 QC	25 ft lb	33.90	Quick Change	14.23	2.192	0.994
10667	1250 Series Exacta 2-75 QC	75 ft lb	101.69	Quick Change	17.54	2.330	1.057
10668	1250 Series Exacta 2-150 QC	150 ft lb	203.37	Quick Change	19.60	2.500	1.134
10669	1250 Series Exacta 2-250 QC	250 ft lb	338.95	Quick Change	22.98	2.780	1.261

### Lever Length and Overall Length

The lever length on models up to 250 are based on 1 7/16" or 36.5mm head length.

\*Lever length for the 10656 is based on a 3 7/8" or 98.4mm head length.



## 1250 Series Exacta 2 Digital Torque Wrench Batteries and Chargers

Part No.	Model Designation	Capacity
10674	Kit, Two Battery Packs and One Charger	N/A
10673	Battery Pack Charger, NiMH	Fast charge with built in circuitry protection against over charging.
10672*	Battery Pack, NiMH	3.6V, 2.1 Ah

\*Use ONLY the Sturtevant Richmond specified NiMH battery cartridge.



**WARNING**



- Do not exceed rated torque
- Do not use to break fasteners loose
- Periodic recalibration is necessary to maintain accuracy
- See safety precautions at [srtorque.com](http://srtorque.com)



## Holding Tool Technology Wrenches

# HT SERIES



## Stop Hydraulic Leaks Before They Start

Engineers with hydraulic assemblies immediately recognize the value this tool brings to their assembly quality.

## Simple Solution to a Complex Problem

Applications involving hydraulic hoses, and or, hydraulic connections, require a counter torque reaction tool. When these tools are not used hoses can be twisted and or, connectors can be misaligned, creating rework or increased warranty costs.

The SR solution is to ensure both torque wrench and back up tool are used during the fastening operation.

At the P-Set level, holding (back-up) tools are paired to the primary torque wrench. The back-up tool must be engaged prior to, during, and after the torque tool is used.

## No Drips, No Runs, No Errors!

Using thrust force to activate the holding (back-up) wrench is similar to using a screwdriver. This helps focus the operator to hold the hose or the connector in a static position while the torque wrench applies the torque.



### ⚠ WARNING



- Do not exceed rated torque
- Do not use to break fasteners loose
- Periodic recalibration is necessary to maintain accuracy
- Read safety precautions on page 61

Part No.	Model	Weight	Length
810673	HTS 13"	1.9 lbs. / .86 kg	13" / 33.02 cm
810674	HTL 20"	4.9 lbs. / 2.22 kg	20" / 50.8 cm



# 1200 SERIES EXACTA<sup>®</sup> 2 Digital Torque Wrench

The 1200 Series Exacta 2 radio speed is 10x that of the 1100 Series Exacta 2.

The 1200 Series Exacta has all the features and characteristics of the 1250 with these exceptions:

- Uses 4 AA NiMH Rechargeable batteries (Batteries not included)
- Non-vibrating handle
- Torque measurement only

Accuracy, reliability, durability are the same as the 1250 Series Exacta 2.



## 1200 Series Exacta 2 Digital Torque Wrenches

Part No.	Model	Capacity	Head Type	Lever Length	Overall Length	Weight
10646	1200 Series Exacta 2 - 25	5-25 ft lb / 6.8-33.8Nm	Dovetail	12.5"/317mm	16.1"/409mm	2.8 lb/1.27 kg
10647	1200 Series Exacta 2 - 75	15-75 ft lb / 20.3-101.5Nm	Dovetail	15.8"/401mm	19.4"/493mm	3.0 lb/1.36 kg
10648	1200 Series Exacta 2 - 150	30-150 ft lb / 40.7-203.3Nm	Dovetail	17.8"/452mm	21.5"/546mm	3.1 lb/1.40 kg
10658	1200 Series Exacta 2 - 250	50-250 ft lb / 67.8-338.9Nm	Dovetail	21.2"/538mm	23.0"/584mm	4.1 lb/1.86 kg
10649	1200 Series Exacta 2 - 250 R	50-250 ft lb / 67.8-338.9Nm	1/2" SD Ratchet	20.8"/527mm	25.0"/634mm	4.1 lb/1.86 kg
10650*	1200 Series Exacta 2 - 400	80-400 ft lb / 108.4-542Nm	Dovetail	35.9"/912mm	35.2"/895mm	7.7 lb/3.49 kg
10670	1200 Series Exacta 2 - 400 R	80-400 ft lb / 108.4-542Nm	3/4" SD Ratchet	33.7"/856mm	38.3"/973mm	7.7 lb/3.49 kg
10651	1200 Series Exacta 2 - 600 R	120-600 ft lb / 162.6-813Nm	3/4" SD Ratchet	55.1"/1399mm	59.7"/1519mm	13.0 lb/5.90 kg
10662	1200 Series Exacta 2 - 25 QC	5-25 ft lb / 6.8-33.8Nm	Quick Change	12.5"/317mm	16.1"/409mm	2.8 lb/1.27 kg
10663	1200 Series Exacta 2 - 75 QC	15-75 ft lb / 20.3-101.5Nm	Quick Change	15.8"/401mm	19.4"/493mm	3.0 lb/1.36 kg
10664	1200 Series Exacta 2 - 150 QC	30-150 ft lb / 40.7-203.3Nm	Quick Change	17.8"/452mm	21.5"/546mm	3.1 lb/1.40 kg
10665	1200 Series Exacta 2 - 250 QC	50-250 ft lb / 67.8-338.9Nm	Quick Change	21.0"/533mm	25.2"/640mm	4.1 lb/1.86 kg
10740	4-Slot Battery Charging Unit	4-slot AC powered external battery charging unit				
10741	8-Slot Battery Charging Unit	8-slot AC powered external battery charging unit				
816261	Rechargeable NiMH batteries	4-pack NiMH Rechargeable Batteries				

### Lever Length and Overall Length

The lever length on models up to 250 are based on 1 7/16" or 36.5mm head length.

\*Lever length for the 10650 is based on a 3 7/8" or 98.4mm head length.

NiMH Batteries rated 1400 mAh to 2400 mAh are acceptable. Higher mAh ratings mean more cycles between recharge and longer recharge times.

Use only NiMH AA rechargeable batteries in the 1200 Series Exacta 2 wrenches. Other batteries will damage the wrench and void the warranty.



- Do not exceed rated torque
- Do not use to break fasteners loose
- Periodic recalibration is necessary to maintain accuracy
- Read safety precautions on page 61



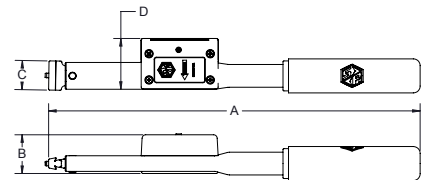
# SLTC-FM Series

## SLTC FM 2.4 GHz Preset Wireless Click Wrench

- Full compatibility with all Global 8, Global 400 and Global 400mp, TCV, TCV e2, and PTV.
- Accuracy of +/- 4% or better of preset value from 20% to 100% of capacity meets or exceeds requirements of ASME B107.300-2010 and ISO 6789.
- Access to well over 200 SR interchangeable heads.
- Excellent audible/tactile impulse when preset torque is achieved.
- Error Proofing By Guidance: Monitors time in the “clicked” position to provide “OK/NOK” quality attribute data with every use of the tool.

### WARNING

- Do not exceed rated torque
- Do not use to break fasteners loose
- Periodic recalibration is necessary to maintain accuracy
- Read safety precautions on page 61



Part No.	Model	Torque Capacity*	Head	A (in.)	B (in.)	C (in.)	D (in.)	Weight (lbs.)
810411	SLTC FM2.4 A3 50 I	10-50 in lb / 1.2-6 Nm	Dovetail	6.93	0.75	1.33	1.73	0.7191
810412	SLTC FM2.4 A3 150 I	30-150 in lb / 3.4-17 Nm	Dovetail	6.93	0.75	1.33	1.73	0.7171
810413	SLTC FM2.4 A3 300 I	60-300 in lb / 6.8-34 Nm	Dovetail	8.93	0.75	1.33	1.73	0.9633
810410	SLTC FM2.4 A3 300 I OHT	60-300 in lb / 6.8-34 Nm	Dovetail	7.12	0.75	1.33	1.73	0.7722
810414	SLTC FM2.4 A3 750 I	150-750 in lb / 17-85 Nm	Dovetail	12.74	1	1.33	1.73	1.2981
810415	SLTC FM2.4 A3 1800 I	360-1800 in lb / 40.8-204 Nm	Dovetail	16.18	1.25	1.33	1.73	1.6720
810421	SLTC FM2.4 1800 I ERGO	360-1800 in lb / 40.8-204 Nm	Dovetail	20.56	1.25	1.33	1.73	2.1893
810420	SLTC FM2.4 A3 3000 I	600-3000 in lb / 67.8-339 Nm	Dovetail	20.81	1.5	1.8	1.73	2.8480
810417	SLTC FM2.4 3600 I	600-3600 in lb / 81.6-408 Nm	Dovetail	24.33	1.75	2.26	2.28	6.3500
810418	SLTC FM2.4 4800 I	960-4800 in lb / 108.4-542 Nm	Dovetail	34.34	1.813	2.92	2.28	7.599
810423	SLTCR FM2.4 750 I	150-750 in lb / 16.95-84.73 Nm	3/8" SD Ratchet	14.359	1.328	1.375	1.734	1.3
810424	SLTCR FM2.4 1800 I	360-1800 in lb / 40.75-203.73 Nm	1/2" SD Ratchet	18.328	1.328	1.953	1.734	1.8
810425	SLTCR FM2.4 1800 I ERGO	360-1800 in lb / 40.75-203.73 Nm	1/2" SD Ratchet	22.703	1.328	1.953	1.734	1.8
810416	SLTCR FM2.4 3000 I	600-3000 in lb / 67.8-339 Nm	1/2" SD Ratchet	22.641	2.50	1.953	2.172	1.8
810419	SLTCR FM2.4 7200 I	1440-7200 in lb / 162.6-813 Nm	3/4" SD Ratchet	37.375	2.6875	2.6875	2.281	10.0

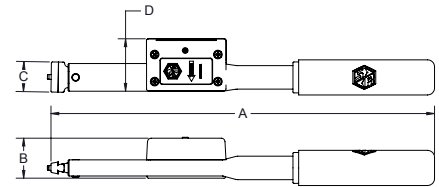


# SLTC Hardwired Series

Our Hardwired Preset Clicker-Type Torque Wrenches are based on our industry favorite LTC/LTCR/LTCS line of preset torque wrenches. The SLTC Hardwired wrenches can be connected to a PLC or DC Controller.

- Accuracy of +/- 4% of preset value from 20% to 100% of capacity.
- Meets or exceeds requirements of ASME B107.300-2010 and ISO 6789.
- Five of seven models use the incredibly strong SR dovetail and can be used with any of over 200 SR Interchangeable Heads.
- Tamper-resistant torque setting mechanism design facilitates setting and discourages unauthorized torque setting changes.
- Excellent audible and tactile impulse when preset torque is achieved.
- Light weight and cushion grip provide excellent ergonomics.
- Slender body facilitates use in constrained-access applications.

- Microswitch closes when tool clicks and opens immediately when pressure is released.
- Separate cable with connector (required) facilitates replacement if damaged.
- Rated at 60 VAC/75 VDC at 3 Amperes maximum



Part No.	Model	Torque Capacity	Head	A (in.)	B (in.)	C (in.)	D (in.)	Weight (lbs.)
810854	SLTC 150 I	30 in. lb.-150 in. lb. / 3.4 Nm-17 Nm	Dovetail	6.938	0.75	0.531	.938	0.5
810855	SLTC 300 I	60 in. lb.-300 in. lb. / 6.8 Nm-34 Nm	Dovetail	8.922	0.75	0.531	.938	0.5
810856	SLTC 750 I	150 in. lb.-750 in. lb. / 17.0 Nm-85 Nm	Dovetail	12.859	1.00	0.531	1.875	0.5
810857	SLTC 1800 I	360 in. lb.-1800 in. lb. / 40.8 Nm-204 Nm	Dovetail	16.688	1.25	0.531	1.875	1.3
810858	SLTC 3600 I	720 in. lb.-3600 in. lb. / 50.6 Nm-408 Nm	Dovetail	24.328	1.75	0.672	2.0	5.5
810859	SLTCS 7200 I	1440 in. lb.-7200 in. lb. / 162.6-813 Nm	3/4" SD	35.094	1.50	1.453	2.0	7.0
810860	SLTCR 7200 I	1440 in. lb.-7200 in. lb. / 162.6-813 Nm	3/4" SD Ratchet	37.375	2.688	1.984	2.0	8.0
10440	Cable for SLTC	Cable with plug, Switch Wrench, SLTC 150I only, coiled 12' extended						
10421	Cable for SLTC	Cable with plug, Switch Wrench, all SLTC/SLTCS/SLTCR models except 150I, coiled 12' extended						
10442	Cable	For SLTC 150 I Wrench: Right Angle Cable, Switch Wrench to bare end, coiled 12' extended						
10423	Cable	Cable, Switch Wrench to bare end, all SLTC/SLTCS/SLTCR except 150I, coiled 12' extended						
10510	Cable	Straight Cable, no coil, Switch Wrench to bare end. 12' in length.						

Cables are sold separately so you can get the configuration you need for your operation.



- Do not exceed rated torque
- Do not use to break fasteners loose
- Periodic recalibration is necessary to maintain accuracy
- Read safety precautions on page 61

# GIM400

## Global Input/Output Multiplier

The GIM400 is a very flexible accessory for the Global 400 and Global 400mp. It is virtually a Windows-based PLC that can be configured using the Global Manager Freeware that is included with every controller. It can be configured to provide 24 VDC to power the 16 I/O. By adding an additional 3 GIM400 a total of 64 I/O is possible.

A single GIM 400 can also be configured to connect with a PLC in a binary fashion, providing up to 100 I/O.

A serial bus cable along with all the appropriate Phoenix connectors are provided with the GIM400.

Compatible with the Global 400 (Part No. 10497) and Global 400mp (Part No. 10612).

**Order the GIM400 using part number 10611.**



# GSM400

## Global Bar Code Scanner Manager

The GSM400 is a perfect accessory to the Global 400mp. Powered off the USB port (on the side of the Global 400mp) it allows connection for up to four (4) serial barcode scanners. Each scanner can be assigned to a network interface and the GSM keeps the scanner and interface paired.

Compatible with the Global 400mp (Part No. 10612).

**Order the GSM400 using part number 10613.**



# TCV-FM 2.4 GHz

## Torque Control Verifier

I/O driven, batch count can be performed by PLC.

- New Feature! Two SLTC FM-2.4 GHz wrenches can be used simultaneously with the TCV. Double your production or throughput.
- Immediately informs operator via lights and a buzzer of proper ("Accept") or improper ("Reject") wrench use
- 5 pin connector for use with 24 VDC I/O system
- Device Programmer software is included with each TCV and allows the ability to assign the purpose of the outputs

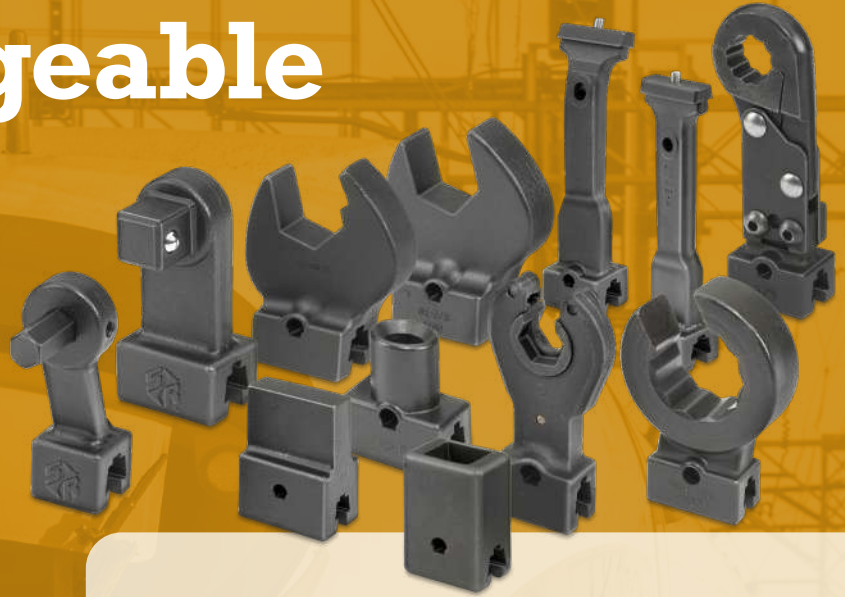
- Easily program tool use specifications through the USB port with supplied software
- Operates on either 110-120 VAC or 220-240 VAC power
- See page: 20 for SLTC FM 2.4 GHz wrench information.



- Do not exceed rated torque
- Do not use to break fasteners loose
- Periodic recalibration is necessary to maintain accuracy
- Read safety precautions on page 61

# Interchangeable Heads

Mixed model manufacturing requires flexible tooling. Our interchangeable head system is the most flexible tooling system found anywhere in the world. Any dovetail head we make will fit on any dovetail wrench we make.



## Dovetail vs. Quick Change Wrenches

Dovetail wrenches use our CART tool to change heads. Quick Change versions require only your thumb.

These heads are available on the Exacta 2 1100, 1200, and 1250 Series digital torque wrenches.



## Custom Solutions

In addition to our established line of interchangeable heads, SR is proud to offer custom solutions to meet your unique torque needs. For more information on custom interchangeable heads and other solutions please contact SR customer service world wide at +1 847-455-867

## Ratchet Style

<b>SDRF</b> Fine-tooth Ratchet .....	22
<b>SDRT</b> Square Drive Ratchet .....	23
Small Ratchet with Larger Drive Size .....	23
Socket Lock Pin .....	23
Hold & Drive Square Drive Ratchet .....	23
<b>Ratchet Renewal Kits</b> .....	23

## Wrench Style Heads

<b>OE</b> Open End.....	24
<b>ROE</b> Ratcheting Open End .....	26
<b>BH</b> Box Head.....	27
<b>FN</b> Flare Nut .....	28

## Drive Style

<b>HD</b> Hex Drive.....	29
<b>SD</b> Square Drive.....	29

## Specialty and Adapters

Crowfoot Adapter .....	29
<b>RFN</b> Ratcheting Flare Nut .....	30
<b>LTCE Series</b> and <b>LTCE-15 Series</b> : Straight and 15 Degree Angled Extension .....	30
<b>STA</b> Standard Tooling Adapters.....	31
<b>Adapters for DIN Style Heads</b> .....	31
<b>Adapters for Round Style Heads</b> .....	31

**What is the Common Centerline?  
Why is it important?**

<http://www.srtorque.com/resources/understanding-the-common-centerline/>



**Sturtevant  
Richmont**

# SDRF

## Fine-tooth Ratchet Interchangeable Head

### Features and Characteristics

- 4.5 degrees of swing arc required to engage the next tooth
- Smooth operation
- Highly durable
- Easy to rebuild with our fine-tooth ratchet renewal kit
- Black oxide exterior
- Sealed compartment to protect the gear from debris
- Reverse lever on back of ratchet

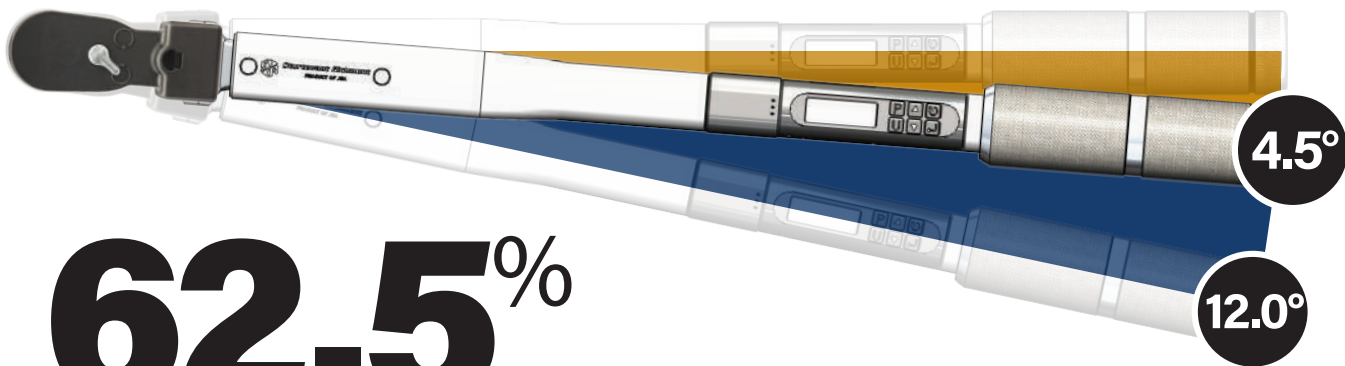


Available in 1/4"  
and 3/8" Drive sizes



The SDRF Interchangeable Head joins over 200 interchangeable heads and over 80 compatible tools in the Sturtevant Richmond lineup, offering you the strength, reliability, and accuracy you demand.

SDRF Series Fine Tooth Ratchet Interchangeable Heads			
Part No.	Model	Torque Capacity	Retention Type
819340	SDRF 3/8	960 in lb	Ball
819341	SDRF 1/4	250 in lb	Ball



# 62.5%

Shorter Swing Length  
vs. coarse 30-tooth ratchet



Both sizes feature a sealed compartment with reverse lever on back



- Do not exceed rated torque
- Do not use to break fasteners loose
- Periodic recalibration is necessary to maintain accuracy
- See safety precautions at [srtorque.com](http://srtorque.com)

## SQUARE DRIVE RATCHET (SDRT)

1<sup>1</sup>/<sub>6</sub>" Common Centerline / 36.5 mm Common Centerline

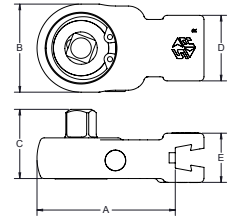
Part No.	Model	Drive Size	A (in.)	B (in.)	C (in.)	D (in.)	E (in.)	Max Torque (in. lbs.)
809504	SDRT - 1/4	1/4"	1.875	1.375	.9375	0.75	0.625	250
809505	SDRT - 3/8	3/8"	2.00	1.50	1.25	1.00	0.5625	1250
809506	SDRT - 1/2	1/2"	2.50	1.75	1.25	1.25	0.75	2500
809507*	SDRT - 3/4	3/4"	5.734	2.6875	1.984	1.50	1.00	4800

\*3<sup>1</sup>/<sub>8</sub>" Common Centerline / 98.4mm Common Centerline

## SMALL RATCHET BODY WITH LARGER DRIVE SIZE

1<sup>1</sup>/<sub>6</sub>" Common Centerline / 36.5 mm Common Centerline

Part No.	Model	Drive Size	A (in.)	B (in.)	C (in.)	D (in.)	E (in.)	Max Torque (in. lbs.)
853752	SDRT 1/4 with 3/8 Square Drive	3/8"	1.875	1.375	.9375	0.75	0.625	250
853395	SDRT 3/8 with 1/2 Square Drive	1/2"	2.00	1.50	1.25	1.00	0.5625	1250
809508	SDRT 1/2 with 3/4 Square Drive	3/4"	2.50	1.75	1.25	1.25	0.75	2500



## SOCKET LOCK PIN

1<sup>1</sup>/<sub>6</sub>" Common Centerline / 36.5 mm Common Centerline

Part No.	Model	Drive Size	A (in.)	B (in.)	C (in.)	D (in.)	E (in.)	Max Torque (in. lbs.)
853304	SDRT 1/4 SOC LOCK PIN	1/4"	1.875	1.375	0.9375	0.75	0.625	250
853305	SDRT 3/8 SOC LOCK PIN	3/8"	2.00	1.50	1.25	1.00	0.5625	1250
853548	SDRT 1/2 SOC LOCK PIN	1/2"	2.50	1.75	1.25	1.25	0.75	2500



## HOLD & DRIVE SQUARE DRIVE RATCHET (SDRT)

1<sup>1</sup>/<sub>6</sub>" Common Centerline / 36.5 mm Common Centerline

Part No.	Model	Drive Size	Hole Size (in.)	Hex Key Size (in.)	A (in.)	B (in.)	C (in.)	D (in.)	E (in.)	Max Torque (in. lbs.)
853619	SDRT-1/4 with 1/8 hole	1/4"	1/8	3/32	1.875	1.375	.9375	0.75	0.625	250
853590	SDRT-1/4 with 9/64 hole	1/4"	9/64	1/8	1.875	1.375	.9375	0.75	0.625	250
853656	SDRT-3/8 with 1/8 hole	3/8"	1/8	3/32	2.00	1.50	1.25	1.00	0.5625	1250
853246	SDRT-3/8 with 5/32 hole	3/8"	5/32	1/8	2.00	1.50	1.25	1.00	0.5625	1250
853364	SDRT- 1/2 with 5/32	1/2"	5/32	1/8	2.50	1.75	1.25	1.25	0.75	2500



## RATCHET RENEWAL KITS

for all ratchet equipped torque wrenches and SDRT heads

Part No.	Description
816998	1/4" Ratchet Renewal Kit for ratchet 809504
816958	3/8" Ratchet Renewal Kit for ratchet 809505
816956	1/2" Ratchet Renewal Kit for ratchet 809506
816999	3/4" Ratchet Renewal Kit for ratchet 809507
816959	3/8" Spindle with 1/2" Drive Ratchet Renewal Kit for ratchet 853395
816957	1/2" Spindle with 3/4" Drive Ratchet Renewal Kit for ratchet 809508



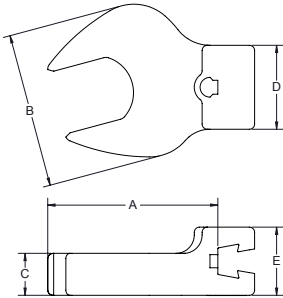
**WARNING**



- Do not exceed rated torque
- Do not use to break fasteners loose
- Periodic recalibration is necessary to maintain accuracy
- Read safety precautions on page 61

## OPEN END (OE)

1<sup>1</sup>/<sub>16</sub>" Common Centerline / 36.5 mm Common Centerline



Part No.	Model	Size	A (in.)	B (in.)	C (in.)	D (in.)	E (in.)	Max Torque (in. lbs.)
819000	OE - 1/4	1/4	1.625	0.75	0.25	0.75	0.6875	100
819001	OE - 5/16	5/16	1.625	0.75	0.25	0.75	0.6875	150
819002	OE - 3/8	3/4	1.8125	1.0625	0.3125	0.75	0.6875	200
819003	OE - 7/16	7/16	1.8125	1.0625	0.3125	0.75	0.6875	300
819004	OE - 1/2	1/2	1.9375	1.3125	0.40625	0.75	0.6875	350
819005	OE - 9/16	9/16	1.9375	1.3125	0.40625	0.75	0.6875	400
819006	OE - 5/8	5/8	1.9375	1.59375	0.4375	0.875	0.6875	600
819007	OE - 11/16	11/16	1.9375	1.59375	0.4375	0.875	0.6875	800
819008	OE - 3/4	3/4	2.0	1.84375	0.5	1.0	0.8125	1000
819009	OE - 13/16	13/16	2.0	1.84375	0.5	1.0	0.8125	1250
819010	OE - 7/8	7/8	2.0	2.125	0.5	1.25	0.8125	1500
819011	OE - 15/16	15/16	2.0	2.125	0.5	1.25	0.8125	1750
819012	OE - 1	1	2.375	2.3125	0.5	1.25	0.8125	2000
819013	OE - 1 1/16	1 1/16	2.375	2.3125	0.5	1.25	0.8125	2250
819014	OE - 1 1/8	1 1/8	2.3125	2.75	0.5	1.25	0.8125	2500
819015	OE - 1 3/16	1 3/16	2.3125	2.75	0.5	1.25	0.8125	2750
819016	OE - 1 1/4	1 1/4	2.3125	2.75	0.5	1.25	0.8125	3000

## OPEN END (OE)

3<sup>1</sup>/<sub>16</sub>" Common Centerline / 98.4mm Common Centerline

Part No.	Model	Size	A (in.)	B (in.)	C (in.)	D (in.)	E (in.)	Max Torque (in. lbs.)
819724	OE-1 <sup>1</sup> / <sub>16</sub>	1 <sup>1</sup> / <sub>16</sub>	4.625	2.9375	.625	1.50	1	4800
819725	OE-1 <sup>1</sup> / <sub>8</sub>	1 <sup>1</sup> / <sub>8</sub>	4.6094	2.9375	.625	1.50	1	4800
819726	OE-1 <sup>1</sup> / <sub>8</sub>	1 <sup>1</sup> / <sub>8</sub>	4.6094	2.9375	.625	1.50	1	4800
819727	OE-1 <sup>1</sup> / <sub>2</sub>	1 <sup>1</sup> / <sub>2</sub>	4.5938	2.9375	.625	1.50	1	4800
819728	OE-1 <sup>1</sup> / <sub>8</sub>	1 <sup>1</sup> / <sub>8</sub>	4.5781	2.9375	.625	1.50	1	4800
819729	OE-1 <sup>1</sup> / <sub>8</sub>	1 <sup>1</sup> / <sub>8</sub>	4.5625	2.9375	.625	1.50	1	4800
819730	OE-1 <sup>11</sup> / <sub>16</sub>	1 <sup>11</sup> / <sub>16</sub>	4.5625	2.9375	.625	1.50	1	4800
819731	OE-1 <sup>1</sup> / <sub>4</sub>	1 <sup>1</sup> / <sub>4</sub>	4.5469	2.9375	.625	1.50	1	4800
819732	OE-1 <sup>13</sup> / <sub>16</sub>	1 <sup>13</sup> / <sub>16</sub>	4.5156	2.9375	.625	1.50	1	4800
819733	OE-1 <sup>7</sup> / <sub>8</sub>	1 <sup>7</sup> / <sub>8</sub>	4.9375	4.34375	.625	1.50	1	4800
819734	OE-1 <sup>15</sup> / <sub>16</sub>	1 <sup>15</sup> / <sub>16</sub>	4.93	4.34375	.625	1.50	1	4800
819735	OE-2	2	4.9219	4.34375	.625	1.50	1	4800
819736	OE-2 <sup>1</sup> / <sub>16</sub>	2 <sup>1</sup> / <sub>16</sub>	4.9063	4.34375	.625	1.50	1	4800
819737	OE-2 <sup>1</sup> / <sub>8</sub>	2 <sup>1</sup> / <sub>8</sub>	4.9063	4.34375	.625	1.50	1	4800
819738	OE-2 <sup>3</sup> / <sub>16</sub>	2 <sup>3</sup> / <sub>16</sub>	4.90	4.34375	.625	1.50	1	4800
819739	OE-2 <sup>1</sup> / <sub>4</sub>	2 <sup>1</sup> / <sub>4</sub>	4.875	4.34375	.625	1.50	1	4800
819740	OE-2 <sup>5</sup> / <sub>16</sub>	2 <sup>5</sup> / <sub>16</sub>	4.80	4.34375	.625	1.50	1	4800
819741	OE-2 <sup>3</sup> / <sub>8</sub>	2 <sup>3</sup> / <sub>8</sub>	4.8594	4.34375	.625	1.50	1	4800
819742	OE-2 <sup>1</sup> / <sub>2</sub>	2 <sup>1</sup> / <sub>2</sub>	4.8438	4.34375	.625	1.50	1	4800
819743	OE-2 <sup>1</sup> / <sub>2</sub>	2 <sup>1</sup> / <sub>2</sub>	4.8281	4.34375	.625	1.50	1	4800
819744	OE-2 <sup>1</sup> / <sub>16</sub>	2 <sup>1</sup> / <sub>16</sub>	4.8125	4.34375	.625	1.50	1	4800
819745	OE-2 <sup>1</sup> / <sub>8</sub>	2 <sup>1</sup> / <sub>8</sub>	4.7969	4.34375	.625	1.50	1	4800
819746	OE-2 <sup>11</sup> / <sub>16</sub>	2 <sup>11</sup> / <sub>16</sub>	5.4844	5.625	.625	1.50	1	4800
819747	OE-2 <sup>1</sup> / <sub>4</sub>	2 <sup>1</sup> / <sub>4</sub>	5.4844	5.625	.625	1.50	1	4800
819748	OE-2 <sup>13</sup> / <sub>16</sub>	2 <sup>13</sup> / <sub>16</sub>	5.4844	5.625	.625	1.50	1	4800
819749	OE-2 <sup>3</sup> / <sub>8</sub>	2 <sup>3</sup> / <sub>8</sub>	5.4844	6.0	.625	1.50	1	4800
819750	OE-2 <sup>15</sup> / <sub>16</sub>	2 <sup>15</sup> / <sub>16</sub>	5.4844	6.0	.625	1.50	1	4800
819751	OE-3	3	5.4844	6.0	.625	1.50	1	4800
819752	OE-3 <sup>1</sup> / <sub>4</sub>	3 <sup>1</sup> / <sub>4</sub>	5.4063	6.0	.625	1.50	1	4800

### WARNING

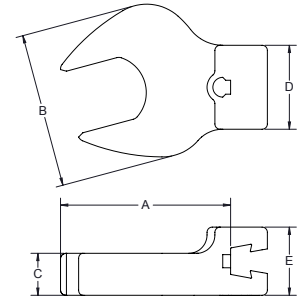


- Do not exceed rated torque
- Do not use to break fasteners loose
- Periodic recalibration is necessary to maintain accuracy
- Read safety precautions on page 61

## OPEN END (OE)

1 $\frac{1}{8}$ " Common Centerline / 36.5 mm Common Centerline

Part No.	Model	Size (mm)	A (mm)	B (mm)	C (mm)	D (mm)	E (mm)	Torque Rating (Nm)
809294	OE-5 mm	5	43.18	20.32	7.62	20.32	17.78	8
809290	OE-6 mm	6	43.18	20.32	7.62	20.32	17.78	9
809291	OE-7 mm	7	43.18	20.32	7.62	20.32	17.78	11
809292	OE-8 mm	8	43.18	20.32	7.62	20.32	17.78	16
809293	OE-9 mm	9	45.72	27.94	7.62	20.32	17.78	22
819943	OE-10 mm	10	45.72	27.94	7.62	20.32	17.78	22
819944	OE-11 mm	11	45.72	27.94	7.62	20.32	17.78	34
809226	OE-12 mm	12	48.26	33.02	10.16	20.32	17.78	39
819945	OE-13 mm	13	48.26	33.02	10.16	20.32	17.78	39
819946	OE-14 mm	14	48.26	33.02	10.16	20.32	17.78	45
809227	OE-15 mm	15	48.26	40.64	10.16	22.86	17.78	67
819947	OE-16 mm	16	48.26	40.64	10.16	22.86	17.78	67
819948	OE-17 mm	17	48.26	40.64	10.16	22.86	17.78	79
809228	OE-18 mm	18	48.26	40.64	10.16	22.86	17.78	90
819949	OE-19 mm	19	50.8	45.72	12.70	25.40	17.78	113
819950	OE-21 mm	21	50.8	45.72	12.70	25.40	20.32	140
819951	OE-22 mm	22	50.8	53.34	12.70	33.02	20.32	169
819952	OE-24 mm	24	50.8	53.34	12.70	33.02	20.32	197
809229	OE-27 mm	27	55.88	58.42	12.70	33.02	20.32	254
819956	OE-30 mm	30	58.42	71.12	12.70	33.02	20.32	310
819958	OE-32 mm	32	58.42	71.12	12.70	33.02	20.32	338



## OPEN END (OE)

3 $\frac{3}{8}$ " Common Centerline / 98.4mm Common Centerline

Part No.	Model	Size (mm)	A (mm)	B (mm)	C (mm)	D (mm)	E (mm)	Torque Rating (Nm)
819761	OE-33 mm	33	117.48	74.61	15.88	38.1	25.4	350
819762	OE-34 mm	34	117.48	74.61	15.88	38.1	25.4	350
819763	OE-35 mm	35	117.08	74.61	15.88	38.1	25.4	350
819766	OE-36 mm	36	117.08	74.61	15.88	38.1	25.4	350
819764	OE-37 mm	37	116.68	74.61	15.88	38.1	25.4	400
819765	OE-38 mm	38	116.68	74.61	15.88	38.1	25.4	400
819771	OE-40 mm	40	116.28	74.61	15.88	38.1	25.4	400
819755	OE-41 mm	41	116.28	74.61	15.88	38.1	25.4	400
819769	OE-42 mm	42	115.89	74.61	15.88	38.1	25.4	400
819774	OE-44 mm	44	125.41	110.33	15.88	38.1	25.4	400
853545	OE-46 mm	46	125.41	110.33	15.88	38.1	25.4	400
819770	OE-48 mm	48	124.62	110.33	15.88	38.1	25.4	400
819756	OE-50 mm	50	125.02	110.33	15.88	38.1	25.4	400
819757	OE-55 mm	55	124.22	110.33	15.88	38.1	25.4	400
819753	OE-60 mm	60	123.43	110.33	15.88	38.1	25.4	400

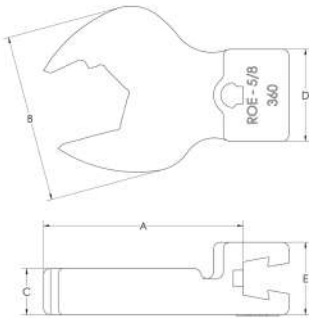


- Do not exceed rated torque
- Do not use to break fasteners loose
- Periodic recalibration is necessary to maintain accuracy
- Read safety precautions on page 61

## RATCHETING OPEN END (ROE)

1<sup>1</sup>/<sub>6</sub>" Common Centerline / 36.5 mm Common Centerline

Slight disengagement from the fastener allows operator to rapidly rotate wrench.

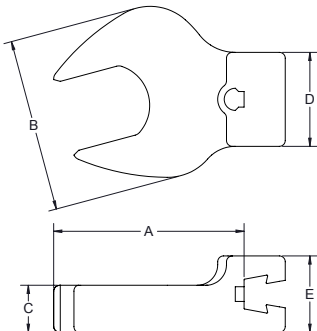


Part No.	Model	Hex Size (in.)	A (in.)	B (in.)	C (in.)	D (in.)	E (in.)	Max Torque (in. lbs.)
819351	ROE 5/16 V Series	5/16	1.6406	0.75	0.25	0.75	0.6875	90
819352	ROE 3/8 V Series	3/8	1.625	1.0625	0.3125	0.75	0.6875	120
819353	ROE 7/16 V Series	7/16	1.7188	1.0625	0.3125	0.75	0.6875	180
819354	ROE 1/2 V Series	1/2	1.7188	1.3125	0.4063	0.75	0.6875	210
819355	ROE 9/16 V Series	9/16	1.8438	1.3125	0.4063	0.75	0.6875	240
819356	ROE 5/8 V Series	5/8	1.8438	1.5938	0.4375	0.75	0.6875	360
819357	ROE 11/16 V Series	11/16	1.875	1.5938	0.4375	0.75	0.6875	480
819358	ROE 3/4 V Series	3/4	2.0	1.8438	0.5	1.0	0.8125	600
819359	ROE 13/16 V Series	13/16	1.9688	1.8438	0.5	1.0	0.8125	750
819360	ROE 7/8 V Series	7/8	1.9688	2.125	0.5	1.25	1.8125	900
819361	ROE 15/16 V Series	15/16	1.9531	2.125	0.4063	0.8125	1.25	1050
819362	ROE 1 1/8 V Series	1 1/8	2.2969	2.25	0.5	1.25	1.25	1500

Part No.	Model	Hex Size (mm)	A (mm)	B (mm)	C (mm)	D (mm)	E (mm)	Max Torque (Nm)
819363	ROE-10 mm V Series	10	43.18	27.94	7.62	20.32	17.78	13
819364	ROE-11 mm V Series	11	43.18	27.94	7.62	20.32	17.78	20
819365	ROE-12 mm V Series	12	45.72	33.02	7.62	20.32	17.78	23
819366	ROE-13 mm V Series	13	45.72	33.02	7.62	20.32	17.78	23
819367	ROE-14 mm V Series	14	45.72	33.02	7.62	20.32	17.78	27
819368	ROE-15 mm V Series	15	45.72	40.64	7.62	22.86	17.78	27
819369	ROE-16 mm V Series	16	45.72	40.64	7.62	22.86	17.78	40
819370	ROE-17 mm V Series	17	45.72	40.64	7.62	22.86	17.78	54
819371	ROE-18 mm V Series	18	45.72	40.64	7.62	22.86	17.78	54
819372	ROE-19 mm V Series	19	48.26	45.72	10.16	25.4	20.32	68
819373	ROE-22 mm V Series	22	50.8	53.34	10.16	33.02	20.32	101
819374	ROE-24 mm V Series	24	50.8	53.34	10.16	33.02	20.32	118
819375	ROE-27 mm V Series	27	53.34	58.42	12.7	33.02	20.32	152
819376	ROE-28 mm V Series	28	53.34	58.42	12.7	33.02	20.32	170
819377	ROE-29 mm V Series	29	58.42	71.12	12.7	33.02	20.32	152

## SLIM PROFILE OPEN END (OE SPH)

1<sup>1</sup>/<sub>6</sub>" Common Centerline / 36.5 mm Common Centerline



Part No.	Model	Size (mm)	A (mm)	B (mm)	C (mm)	D (mm)	E (mm)	Torque Rating (Nm)
853912	OE-13 mm SPH	13	45.62	28.58	5.87	22.23	17.45	37
853913	OE-17 mm SPH	17	48.41	27.66	5.77	22.23	17.45	25
853871	OE-19 mm SPH	19	47.50	40.01	4.50	25.40	20.62	45
853872	OE-22 mm SPH	22	48.77	35.23	7.01	31.75	20.62	38
853873	OE-24 mm SPH	24	49.63	42.49	6.50	31.75	20.62	71
853874	OE-27 mm SPH	27	50.80	44.50	7.49	31.75	20.62	100
853875	OE-30 mm SPH	30	52.10	48.01	7.75	31.75	20.62	103
853914	OE-32 mm SPH	32	59.13	50.47	11	31.75	20.62	103
853876	OE-36 mm SPH	36	118.01	57.76	10.01	38.10	22.35	152
853877	OE-41 mm SPH	41	120.04	68.53	9.50	38.10	22.35	260
853923	OE-50 mm SPH	50	123.95	85.85	11	38.10	22.35	275



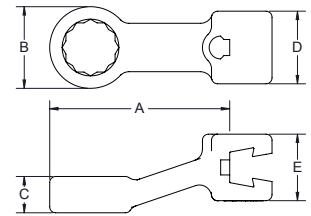
- Do not exceed rated torque
- Do not use to break fasteners loose
- Periodic recalibration is necessary to maintain accuracy
- Read safety precautions on page 61

# BOX HEAD (BH)

1/16" Common Centerline / 36.5 mm Common Centerline

Part No.	Model	Size (in.)	A (in.)	B (in.)	C (in.)	D (in.)	E (in.)	Max Torque (in. lbs.)
819060	BH - 1/4	1/4	1.7031	0.53125	0.2813	0.75	0.6875	250
819061	BH - 5/16	5/16	1.7031	0.53125	0.2813	0.75	0.6875	350
819062	BH - 3/8	3/8	1.75	0.625	0.2813	0.75	0.6875	450
819063	BH - 7/16	7/16	1.8125	0.75	0.3494	0.75	0.6875	650
819064	BH - 1/2	1/2	1.8594	0.8438	0.375	0.75	0.6875	850
819065	BH - 9/16	9/16	2.0	1.0	0.4063	0.875	0.6875	1050
819066	BH - 5/8	5/8	2.0	1.0625	0.5469	0.9375	0.8125	1250
819067	BH - 11/16	11/16	2.0	1.125	0.5	0.9375	0.8125	1450
819068	BH - 3/4	3/4	2.0625	1.25	0.5469	1.0	0.8125	1800
819070	BH - 7/8	7/8	2.25	1.3125	0.625	1.25	0.8125	2400
819071	BH - 15/16	15/16	2.25	1.50	0.6563	1.25	0.8125	2700
819072	BH - 1	1	2.25	1.5625	0.7188	1.25	0.8125	3000
819073	BH - 1 1/16	1 1/16	2.25	2.0625	0.875	1.25	0.8125	3150
819074	BH - 1 1/8	1 1/8	2.5	2.0625	0.875	1.25	0.8125	3300
819075	BH - 1 1/4	1 1/4	2.5	2.0625	0.875	1.25	0.8125	3600

Part No.	Model	Size (mm)	A (mm)	B (mm)	C (mm)	D (mm)	E (mm)	Max. Torque (Nm)
809301	BH-7 mm	7	43.18	12.7	7.62	20.32	20.32	28
809302	BH-8 mm	8	43.18	12.7	7.62	20.32	20.32	39
809303	BH-9 mm	9	45.72	15.24	7.62	20.32	20.32	50
809230	BH-10 mm	10	45.72	15.24	7.62	20.32	20.32	50
809231	BH-11 mm	11	45.72	20.32	10.16	20.32	20.32	73
809304	BH-12 mm	12	45.72	20.32	10.16	20.32	20.32	96
809232	BH-13 mm	13	45.72	20.32	10.16	20.32	20.32	96
809233	BH-14 mm	14	48.26	25.4	10.16	22.86	20.32	119
809234	BH-15 mm	15	50.8	27.94	12.7	25.4	22.86	141
809305	BH-16 mm	16	50.8	27.94	12.7	25.4	22.86	141
809235	BH-17 mm	17	50.8	27.94	12.7	25.4	22.86	163
809306	BH-18 mm	18	50.8	27.94	12.7	25.4	22.86	163
809236	BH-19 mm	19	53.34	33.02	15.24	25.4	22.86	203
809309	BH-20 mm	20	53.34	33.02	15.24	25.4	22.86	225
809307	BH-21 mm	21	53.34	33.02	15.24	25.4	22.86	237
809308	BH-22 mm	22	55.88	35.56	15.24	33.02	22.86	271
809237	BH-24 mm	24	55.88	35.56	17.78	33.02	22.86	305
809352	BH-27 mm	27	55.88	40.64	17.78	33.02	22.86	355



## WARNING



- Do not exceed rated torque
- Do not use to break fasteners loose
- Periodic recalibration is necessary to maintain accuracy
- Read safety precautions on page 61

### Dovetail vs. Quick Change Wrenches

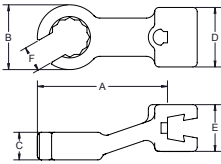
Dovetail wrenches use our CART tool to change heads. Quick Change versions require only your thumb.

These heads are available on the Exacta 2 1100, 1200, 1250 and 1350 Series digital torque wrenches.



# FLARE NUT (FN)

1/16" Common Centerline / 36.5 mm Common Centerline



Part No.	Model	Size (in.)	A (in.)	B (in.)	C (in.)	D (in.)	E (in.)	F (in.)	Max Torque (in. lbs.)
819025	FN-1/4	1/4	1.75	0.625	0.3438	0.75	0.6875	0.1875	100
819026	FN-5/16	5/16	1.8125	0.625	0.3594	0.75	0.6875	0.1875	150
819027	FN-3/8	3/8	1.8594	0.8438	0.375	0.75	0.6875	0.2813	200
819028	FN-7/16	7/16	1.8594	0.8438	0.375	0.75	0.6875	0.3438	250
819029	FN-1/2	1/2	1.9688	1.0625	0.4063	0.875	0.6875	0.375	300
819030	FN-9/16	9/16	1.9688	1.0625	0.4688	1.0	0.8125	0.4375	350
819031	FN-5/8	5/8	2.0	1.125	0.5313	1.0	0.8125	0.5313	400
819032	FN-11/16	11/16	2.0625	1.3125	0.54688	1.0	0.8125	0.5313	475
819033	FN-3/4	3/4	2.0625	1.3125	0.54688	1.0	0.8125	0.5313	600
819034	FN-13/16	13/16	2.25	1.00	0.625	1.25	0.8125	0.625	700
819035	FN-7/8	7/8	2.25	1.50	0.65625	1.25	0.8125	0.6875	800
819036	FN-15/16	15/16	2.375	1.5625	0.7188	1.25	0.8125	0.7188	900
819037	FN-1	1	2.5	1.5625	0.7188	1.25	0.8125	0.75	1000
819038	FN-1 1/16	1 1/16	2.5	1.5625	0.875	1.25	0.8125	0.75	1050

Part No.	Model	Size (mm)	A (mm)	B (mm)	C (mm)	D (mm)	E (mm)	F (mm)	Max Torque (Nm)
809243	FN-8 mm	8	45.72	20.32	10.16	20.32	20.32	7.62	16
809217	FN-9 mm	9	45.72	20.32	10.16	20.32	20.32	7.62	19
809218	FN-10 mm	10	45.72	20.32	10.16	20.32	20.32	7.62	22
809221	FN-11 mm	11	45.72	20.32	10.16	20.32	20.32	7.62	28
809241	FN-12 mm	12	48.26	25.40	10.16	22.86	20.32	10.16	30
809219	FN-13 mm	13	48.26	25.40	10.16	22.86	20.32	10.16	33
809220	FN-14 mm	14	50.80	27.94	12.70	25.40	20.32	10.16	40
809222	FN-15 mm	15	50.80	27.94	12.70	25.40	20.32	10.16	45
809238	FN-16 mm	16	50.80	27.94	12.70	25.40	20.32	12.70	50
809223	FN-17 mm	17	53.34	33.02	15.24	25.40	20.32	12.70	54
809239	FN-18 mm	18	53.34	33.02	15.24	25.40	20.32	15.24	61
809224	FN-19 mm	19	53.34	33.02	15.25	25.40	20.32	15.24	68
809240	FN-21 mm	21	53.34	38.10	17.78	33.02	20.32	17.78	80
809242	FN-22 mm	22	55.88	38.10	17.78	33.02	20.32	17.78	90
809225	FN-24 mm	24	55.88	40.64	17.78	33.02	20.32	17.78	105

## WARNING



- Do not exceed rated torque
- Do not use to break fasteners loose
- Periodic recalibration is necessary to maintain accuracy
- Read safety precautions on page 61

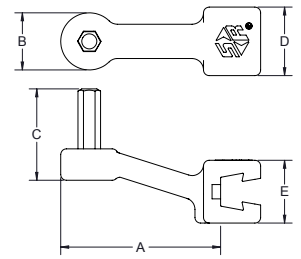
# HEX DRIVE (HD)

1 1/16" Common Centerline / 36.5 mm Common Centerline

Part No.	Model	Size (in.)	A (in.)	B (in.)	C (in.)	D (in.)	E (in.)	Max. Torque (in. lbs.)
819687	HD-3/32	3/32	1.7	0.5	0.8	0.8	0.7	30
819689	HD-1/8	1/8	1.7	0.5	0.8	0.8	0.7	70
853032	HD-9/64	9/64	1.7	0.5	0.8	0.8	0.7	70
819691	HD-5/32	5/32	1.7	0.5	1.0	0.8	0.7	135
819692	HD-3/16	3/16	1.7	0.5	1.0	0.8	0.7	235
819693	HD-7/32	7/32	1.8	0.6	1.0	0.8	0.7	340
819694	HD-1/4	1/4	1.8	0.6	1.0	0.8	0.7	450
819695	HD-5/16	5/16	1.8	0.8	1.0	0.8	0.7	850
819696	HD-3/8	3/8	1.8	0.8	1.0	0.8	0.7	850
819702	HD-7/8	7/8	2.2	1.5	2.0	1.3	0.8	2700



Part No.	Model	Size (mm)	A (mm)	B (mm)	C (mm)	D (mm)	E (mm)	Max. Torque (Nm)
809315	HD-4 mm	4	43.18	12.70	25.40	20.32	2.32	14
809316	HD-5 mm	5	43.18	12.70	25.40	20.32	20.32	27
809317	HD-6 mm	6	45.72	15.24	25.40	20.32	20.32	37
809328	HD-8 mm	8	45.72	20.32	25.40	20.32	20.32	95
809330	HD-10 mm	10	48.26	25.40	25.40	22.86	20.32	141

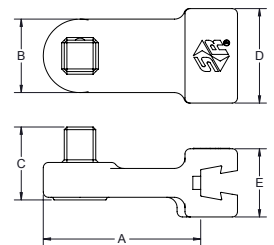


# SQUARE DRIVE (SD)

1 1/16" Common Centerline / 36.5 mm Common Centerline

Part No.	Model	Drive Size (in.)	A (in.)	B (in.)	C (in.)	D (in.)	E (in.)	Max Torque (in. lbs.)
819057	SD - 1/4	1/4	1.75	0.875	0.75	0.625	0.6875	250
819058	SD - 3/8	3/8	1.875	0.875	0.75	0.625	0.6875	1250
819059	SD - 1/2	1/2	1.9375	0.9375	0.75	0.625	0.6875	2500
819119*	SD - 3/4	3/4	5.141	1.50	1.75	0.875	0.6875	4800

\*3/8" Common Centerline / 98.4mm Common Centerline



# CROWFOOT ADAPTER (SRA)

- Gain the significant advantage of our interchangeable head system by attaching the SRA to any fixed square drive wrench.
- Ideal for use when a direct reading torque wrench is required but space is limited.
- Use of an adapter requires calculation of torque output.
- When used with our 1 7/16" / 36.5mm Interchangeable Heads the adapter length will be 3" or 76.2mm.



Part No.	Model	Description
850653	SRA-3/8	3/8 Female-Male Dovetail
850655	SRA-1/2	1/2 Female-Male Dovetail

**WARNING**



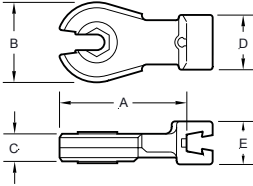
- Do not exceed rated torque
- Do not use to break fasteners loose
- Periodic recalibration is necessary to maintain accuracy
- Read safety precautions on page 61



## RATCHETING FLARE NUT (RFN)

1 $\frac{1}{8}$ " Common Centerline / 36.5 mm Common Centerline  
Single-direction ratchet for use with hydraulic or pneumatic fittings.

Part Number	Model	Size (mm)	A (mm)	B (mm)	C (mm)	D (mm)	E (mm)	Max. Torque (Nm)
819086	RFN-10 mm	10	50.8	7.62	15.24	22.86	17.78	45
819087	RFN-11 mm	11	50.8	7.62	15.24	22.86	17.78	45
819088	RFN-12 mm	12	50.8	7.62	15.24	22.86	17.78	45
819090	RFN-13 mm	13	50.8	7.62	15.24	22.86	17.78	45

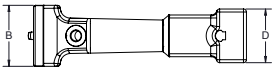


## LTCE-SERIES & LTCE-15 SERIES

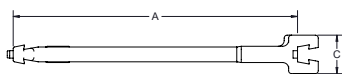
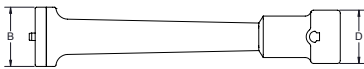
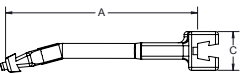
Straight & 15 Degree Angled Extension

Part No.	Model	Angle (degrees)	A (in.)	B (in.)	C (in.)	D (in.)	Max. Torque (in. lbs)
819424	LTCE - 4	0	4	1.125	0.375	1.125	300
819467	LTCE - 6	0	6	1.25	0.375	1.125	800
819487	LTCE - 4 - 15	15	4	1.125	0.375	1.125	300
819504	LTCE - 6 - 15	15	6	1.25	0.375	1.125	800
819021	LTCE - 14	0	14	1.75	0.375	1.50	800

Do not use these with CCM-Series torque wrenches.  
Preset the torque wrench after the extension and fastener engagement head have been attached to the tool.



Angled 15° to Tool Centerline

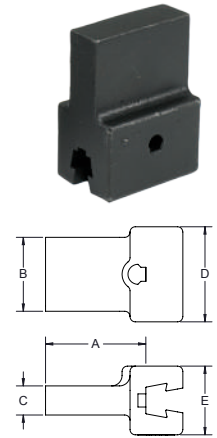


- Do not exceed rated torque
- Do not use to break fasteners loose
- Periodic recalibration is necessary to maintain accuracy
- Read safety precautions on page 61

## STANDARD TOOLING ADAPTERS (STA)

When fabricating special heads to be used with CCM torque handles other than Model CCM 300 and CCM 400, the 1 $\frac{7}{16}$ " / 36.5mm dimension must be maintained between the inside of the attachment block and the centerline of the wrench head. Model CCM 300 and CCM 400 are calibrated to 3 $\frac{7}{8}$ " / 98.4mm common centerline.

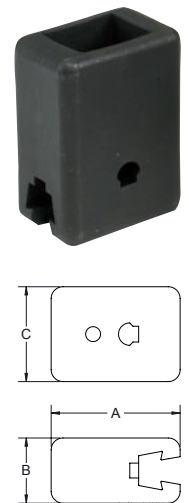
Part No.	Model	A (in.)	B (in.)	C (in.)	D (in.)	E (in.)	Max. Torque (in. lbs.)
819901	STA - 1	0.9375	0.5625	0.25	0.75	0.6875	1600
819902	STA - 2	1.1875	0.875	0.34375	1.125	0.8125	2500
809917	STA - 3	1.50	1.50	0.50	1.50	1	4800



## ADAPTERS FOR DIN STYLE HEADS

- Can be used to convert most DIN style heads to a female dovetail for use on all SR LTC series wrenches. Torque values should be set with the adapter and head attached to the wrench.
- Because of the variation in the length of the DIN plug type heads, it is not recommended that this adapter be used with CCM micrometer adjustable wrenches.

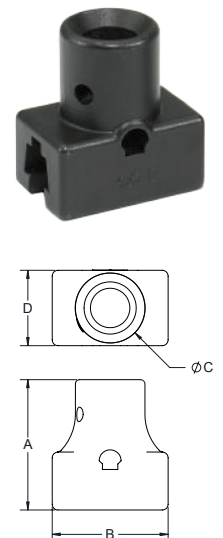
Part No.	Model	A (in.)	B (in.)	C (in.)	Max. Torque (Nm)
819136	Adapter, 9mm x 12mm	1.3594	1.0625	1	282
819137	Adapter, 14mm x 18mm	1.3594	1.25	0.8125	542



## ADAPTERS FOR ROUND STYLE HEADS

- Can be used to convert most round style heads to a female dovetail for use on all SR LTC series wrenches. Torque values should be set with the adapter and head attached to the wrench.
- Because of the variation in the length of the round plug type heads, it is not recommended that this adapter be used with CCM micrometer adjustable wrenches.

Part No.	Model	Description	A (in.)	B (in.)	C (in.)	D (in.)	Max. Torque (in. lbs.)
853021	BAJ	"J" size female-female dovetail	1.40625	1.25	0.75	0.8125	2500
853022	BAY	"Y" size female-female dovetail	1.40625	1.25	0.75	0.8125	2500



### **WARNING**



- Do not exceed rated torque
- Do not use to break fasteners loose
- Periodic recalibration is necessary to maintain accuracy
- Read safety precautions on page 61

# Torque Application

When customers say that we build the world's best torque tools what do they really mean?

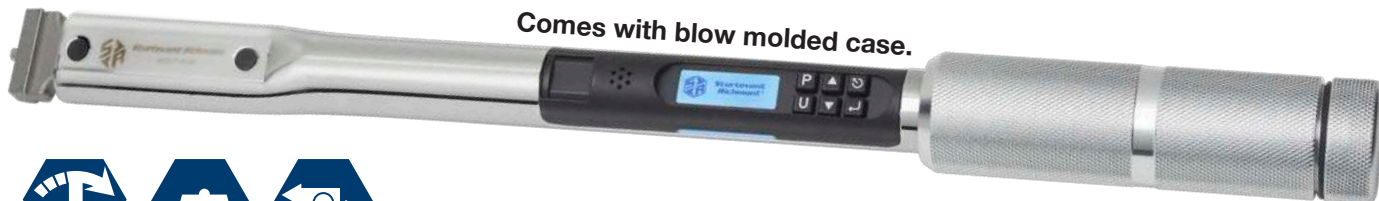
- Our tools are much easier to calibrate
- They stay in calibration much longer than other tools
- Tools provide highly repeatable results
- Last for many more cycles than other tools
- Have the lowest cost of ownership

<b>DTC Interchangeable Head Digital Torque &amp; Angle Wrench</b> .....	33
<b>DTC Connect Freeware P-Set and Result Software</b> .....	34
<b>Exacta 2 Bi-directional Interchangeable Head Digital Torque and Angle Wrench</b> .....	35
<b>CCM Series Interchangeable Head Micrometer Adjustable</b> .....	36
<b>SDR Series Square Drive Ratchet Micrometer Adjustable</b> .....	37
<b>SD Series Square Drive Micrometer Adjustable</b> .....	38
<b>LTC Series Interchangeable Head Preset</b> .....	39
<b>LTCR Series Square Drive Ratchet Preset</b> .....	40
<b>LTCS Series Square Drive Preset</b> .....	41
<b>BLT Series Bidirectional Interchangeable Head Preset</b> .....	42
<b>M Series Flat Beam Torque Wrench</b> .....	43
<b>IDW Series Industrial Dial Torque Wrench</b> .....	45
<b>P-Series Preset Torque Screwdrivers</b> .....	46
<b>CAL 36/4 Micrometer Adjustable Screwdrivers</b> .....	47
<b>ExacTorq® Micrometer Adjustable Screwdrivers</b> .....	48
<b>TD-Series Digital Torque &amp; Angle Screwdrivers</b> .....	49
<b>PM-Series Preset Torque Screwdrivers</b> .....	50

Accurate. Reliable. Durable.  
Tools You Trust.



**Sturtevant  
Richmont**



# DTC

## Interchangeable Head Digital Torque and Angle Wrench

- Meets/exceeds ASME B107.300-2010 and ISO 6789 requirements
- Bi-directional +/- 2% Indicated Value from 20% to 100% of tool capacity.
- All torque and angle settings can be set using buttons on wrench or DTC Connect Freeware.
- Built around our traditional pin/spring Dovetail you have access to over 200 interchangeable heads.
- SDRT head included with wrench.
- Head length is adjustable via keypad. Uses 1 7/16" (36.5 mm) or 3 7/8" (98.4 mm) and maintains common centerline.
- Visible from any angle, light bands on both sides of the wrench turn yellow, then green, the wrench beeps, and the handle vibrates when target torque is achieved.

### Five Modes of Operation:

- TAM (torque and angle monitoring – double hit protection and identifies changing joint conditions)
- T2A (torque to angle – for highly engineered assemblies)
- Track Mode (displays torque value as torque is applied. No angle measurement)
- Residual (measures existing torque on previously tightened fasteners)
- Peak (all torque, no angle measurement)

- Three AAA batteries included with wrench. Works with rechargeable NiMH, Lithium Ion, or alkaline batteries.
- Target, minimum, and maximum torque entered via wrench keypad or DTC Connect Freeware.
- Lockable settings (and presets), via 4-digit password.
- Torque units: in.lb., ft.lb., Nm, cNm, cmkg, mkg.
- 99 presets, numbered 01-99, optionally named via serial command with up to 16-character names.
- Results log large enough for even the busiest assemblies. Download results in csv. format via mini-USB port.
- New, smaller profile fits in more places with light-weight, rugged design.

Part No.	Model	Torque Capacity	Overall Length	Weight without head	Included Head
10680	DTC 4	10-50 in lb / 1.12-5.6 Nm	13.88 in	1.04 lb	1/4" SDRT
10685	DTC 5	12-60 in lb/1.35 - 6.77 Nm	13.88	1.04	1/4" SDRT
10681	DTC 25	60-300 in lb / 6.78-33.9 Nm	14.88 in	1.14 lb	3/8" SDRT
10682	DTC 75	180-900 in lb / 20.34-101.7 Nm	16.5 in	1.29 lb	3/8" SDRT
10686	DTC 80	192-960 in lb/21.69 - 108.46 Nm	16.5 in	1.29	3/8" SDRT
10683	DTC 150	360-1800 in lb / 40.6-203 Nm	19.75 in	1.55 lb	1/2" SDRT
10684	DTC 250	600-3000 in lb / 67.78-338.9 Nm	27.68 in	2.18 lb	1/2" SDRT

All models come with our traditional Pin and Spring Dovetail which gives you access to using more than 200 SR one-piece, interchangeable heads. Wrenches calibrated for use with heads having 1 7/16" (36.5mm) common centerline. On request wrenches can be calibrated for 3 7/8" (98.4mm) centerline. The DTC can change the common centerline head length in the software setting and not have to recalibrate the tool.

NiMH Batteries rated 1400 mAh to 2400 mAh are acceptable. Higher mAh ratings mean more cycles between recharge and longer recharge times.

Unlike our other digital torque wrenches, the DTC can use alkaline, Ni-MH, or Lithium Ion batteries. Never mix types of batteries (e.g. never combine alkaline and Ni-MH batteries, or Ni-MH and Lithium Ion batteries) and never mix new and old batteries in the DTC.

Although the DTC uses both alkaline and rechargeable batteries, we recommend rechargeable batteries because they are environmentally friendly.

The DTC uses three AAA batteries in a cartridge.

# DTC Connect

*Make your DTC Torque and Angle Wrench even more powerful ... FOR FREE!*



## When you connect your DTC with DTC Connect Software you can:

- Set unit of measure, torque mode, and torque values directly from your Windows PC.
- Set, change, name and save parameters
- Download the results log from the wrench and upload the CSV formatted file to Excel or another program.
- Say goodbye to terminal emulator programs with this Windows PC-based software

Only available to those who purchase and register DTC Torque and Angle Wrenches Registered users receive updates and upgrades emailed directly to them.

Registration is fast and simple at [srtorque.com](http://srtorque.com) We just need your contact information, tool capacity, and seven digit tool serial number. The serial number is found on the underside of the tool, near the dovetail.

### **WARNING**



- Do not exceed rated torque
- Do not use to break fasteners loose
- Periodic recalibration is necessary to maintain accuracy
- Read safety precautions on page 61

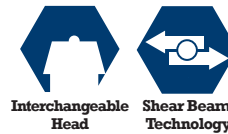


# Exacta 2

Comes with blow molded case.

## Bi-directional Interchangeable Head Digital Torque Wrench

- Bi-directional accuracy of +/- 1% of Indicated Value from 20% to 100% of capacity in Track and Peak modes meets or exceeds requirements of ASME B107.300-2010 and ISO 6789.
- The residual mode makes this a great tool for auditing previously fastened joints.
- The display changes color with yellow/green/red sequence to inform operator status.
- Audible prompts from a beeper supplement visual information.
- Exacta® 2 comes with a serial cable for communication with a PC.
- Simple front panel programming. Four buttons on the front of the Exacta® 2 electronics module permit programming and operation of all key functions.
- Memory can store up to 999 records and can be accessed, reviewed, uploaded and printed - all from the front keypad!
- Free Exawin software for programming Exacta® 2 from a PC.
- Four of six models have the SR dovetail and can be used with SR Interchangeable Heads.
- The Exacta® 2 uses four (4) AA NiMH batteries



Part No.	Model	Torque Capacity	Lever Length	Overall Length	Weight	Head
10530	Exacta 2 - 25	5-25 ft lb / 6.76-33.8 Nm	12.5" / 317 mm	16.1" / 409 mm	2.8 lbs/ 1.27 kg	Dovetail
10531	Exacta 2 - 75	15-75 ft lb / 20.3-101.5 Nm	15.8" / 401mm	19.4" / 493 mm	3.0 lbs / 1.36 kg	Dovetail
10532	Exacta 2 - 150	30-150 ft lb / 40.66-203.3 Nm	17.8" / 452 mm	21.5" / 546 mm	3.1 lbs/ 1.40 kg	Dovetail
10536	Exacta 2 - 250	50-250 ft lb / 67.78-338.9 Nm	21.0" / 533 mm	21.2"/538mm	23.0"/584mm	Dovetail
10533	Exacta 2 - 250 R	50-250 ft lb / 67.78-338.9 Nm	21.0" / 533 mm	20.8"/527mm	25.0"/634mm	1/2" SD Ratchet
10535*	Exacta 2 - 400	80-400 ft lb / 108.6-543 Nm	36.5" / 927.1 mm	35.9"/912mm	35.2"/895mm	Dovetail
10537	Exacta 2 - 400 R	80-400 ft lb / 108.6-543 Nm	36.5" / 927.1 mm	33.7"/856mm	38.3"/973mm	3/4" SD Ratchet
10534	Exacta 2 - 600 R	120-600 ft lb / 162.7-813.5 Nm	55.1" / 1399 mm	59.7" / 1516 mm	13.0 lbs. / 5.90 kg	3/4" SD Ratchet
10521	Exacta 2 - 25 QC	5-25 ft lb / 6.76-33.8 Nm	12.5" / 317 mm	16.1" / 409 mm	2.8 lbs/ 1.27 kg	Quick Connect
10522	Exacta 2 - 75 QC	15-75 ft lb / 20.3-101.5 Nm	15.8" / 401mm	19.4" / 493 mm	3.0 lbs / 1.36 kg	Quick Connect
10523	Exacta 2 - 150 QC	30-150 ft lb / 40.66-203.3 Nm	17.8" / 452 mm	21.5" / 546 mm	3.1 lbs/ 1.40 kg	Quick Connect
10518	Exacta 2 - 250 QC	50-250 ft lb / 67.78-338.9 Nm	21.0" / 533 mm	25.2" / 640 mm	4.1 lbs/ 1.86 kg	Quick Connect
21774	Charger & 4 AA NiMH	4 AA NiMH 1400 mAh batteries & charger, NAFTA only				
816261	AA NiMH Batteries	1400 mAh NiMH batteries, 4-pack				

\*Wrenches calibrated for use with heads having 3 7/8" (98.4mm) common centerline. On request wrenches can be calibrated for 1 7/16" (36.5mm) centerline.

NiMH Batteries rated 1400 mAh to 2400 mAh are acceptable. Higher mAh ratings mean more cycles between recharge and longer recharge times. Use only NiMH AA rechargeable batteries in the 1200 Series Exacta 2 wrenches. Other batteries will damage the wrench and void the warranty.

We build highly durable tools with sophisticated electronics. We design circuits to be as energy efficient as possible. We are also concerned about the environment.

Our tool and tester circuit boards are designed on the highly consistent 1.2 volt power curve provided by rechargeable NiMH batteries. Other batteries like Alkaline or Lithium batteries provide 1.5 volts in the power curve. The additional voltage will damage the circuit board.



- Do not exceed rated torque
- Do not use to break fasteners loose
- Periodic recalibration is necessary to maintain accuracy
- Read safety precautions on page 61



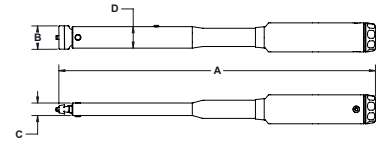
## Interchangeable Head Micrometer Adjustable

# CCM Series



Interchangeable  
Head

- Incredible Versatility! Accepts well over 200 interchangeable heads, as well as custom heads and extensions, and offers micrometer torque adjustment!
- The +/- 4% Indicated Value Accuracy meets or exceeds ASME B107.300 - 2010, AS 28431 and ISO 6789.
- Fast adjustment—takes the fewest rotations of any tool to reach full scale!
- Excellent audible and tactile impulse when set torque achieved.



Part No.	Model	Torque Capacity	Steps of Graduations	A (in.)	B (in.)	C (in.)	D (in.)	Weight (lbs)
869769	CCM 50 I MG	10 in lb-50 in lb	1 in lb	10.15	0.75	0.54	0.92	1.59
869765	CCM 150 I MG	30 in lb-150 in lb	2 in lb	9.95	0.75	0.54	0.92	1.64
869773	CCM 200 I MG	40 in lb-200 in lb	2 in lb	9.96	0.75	0.54	0.92	1.59
869763	CCM 600 I MG	100 in lb-600 in lb	5 in lb	13.71	1.00	0.54	0.92	1.30
869766	CCM 750 I MG	150 in lb-750 in lb	5 in lb	13.71	1.00	0.54	0.92	1.30
869764	CCM 1200 I MG	200 in lb-1200 in lb	10 in lb	16.86	1.25	0.54	0.92	1.65
869762	CCM 1800 I MG	300 in lb-1800 in lb	10 in lb	17.07	1.25	0.54	0.92	1.64
869770	CCM 75 MG	15 ft lb-75 ft lb	1/2 ft lb	13.49	1.00	0.54	0.92	1.30
869771	CCM 150 MG	30 ft lb-150 ft lb	1 ft lb	17.41	1.25	0.54	0.92	1.65
810335*	CCM 300 MG	50 ft lb-300 ft lb	2 1/2 ft lb	25.68	1.75	0.67	2.01	6.05
810772*	CCM 400 MG	80 ft lb-400 ft lb	5 ft lb	35.06	1.81	0.67	2.01	7.29

Part No.	Model	Torque Capacity	Steps of Graduations	A (mm)	B (mm)	C (mm)	D (mm)	Weight (kg)
869784	CCM 6 Nm	1 Nm-6 Nm	.1 Nm	258.07	19.05	13.61	23.35	0.72
869785	CCM 20 Nm	4 Nm-20 Nm	.2 Nm	256.23	19.05	13.61	23.35	0.74
869786	CCM 100 Nm	20 Nm-100 Nm	0.5 Nm	345.63	25.40	13.61	23.35	0.63
869787	CCM 200 Nm	40 Nm-200 Nm	1 Nm	426.39	31.75	13.61	23.35	0.75
810788*	CCM 400 Nm	75 Nm-400 Nm	2.5 Nm	649.20	44.45	17.02	50.93	2.84
810794*	CCM 600 Nm	100 Nm-600 Nm	5 Nm	902.32	46.04	17.02	50.93	3.41

\*Wrenches calibrated for use with heads having 3 7/8" (98.4mm) common centerline. On request wrenches can be calibrated for 1 7/16" (36.5mm) centerline.



**WARNING**



- Do not exceed rated torque
- Do not use to break fasteners loose
- Periodic recalibration is necessary to maintain accuracy
- Read safety precautions on page 61

# SDR Square Drive Ratchet Micrometer Adjustable Series

Comes with blow molded case.

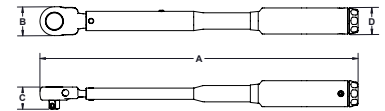


- Fastest torque adjustment across the scale via rotating grip.
- Locking tail piece prevents inadvertent target torque change.
- At set torque value a strong audible and tactile impulse is emitted.
- Includes storage case.
- Ratchet design is very strong and durable.
- Accuracy of +/- 4% Indicated Value (from 20% to 100% of capacity) meets or exceeds ASME B107.300 - 2010, ISO 6789, and AS 28431.

## WARNING



- Do not exceed rated torque
- Do not use to break fasteners loose
- Periodic recalibration is necessary to maintain accuracy
- Read safety precautions on page 59



### SDR Fixed Ratchet Head Series

Part No.	Model	Torque Capacity	Steps of Graduation	Square Drive (in.)	A (in.)	B (in.)	C (in.)	D (in.)	Weight (lbs)
869749	2 SDR 50 I MG	10 in lb-50 in lb	1 in lb	1/4	11.234	.969	0.797	.9375	1.0
869750	2 SDR 150 I MG	30 in lb-150 in lb	2 in lb	1/4	11.609	.969	0.797	.9375	1.0
869781	2 SDR 200 I MG	40 in lb-200 in lb	2 in lb	1/4	10.719	.969	0.797	.9375	1.0
869751	3 SDR 150 I MG	30 in lb-150 in lb	2 in lb	3/8	11.594	1.348	1.063	.9375	1.1
869761	3 SDR 200 I MG	40 in lb-200 in lb	2 in lb	3/8	11.719	1.348	1.063	.9375	1.1
869748	3 SDR 600 I MG	100 in lb-600 in lb	5 in lb	3/8	15.348	1.375	1.063	.9375	1.5
869752	3 SDR 750 I MG	150 in lb-750 in lb	5 in lb	3/8	15.156	1.375	1.063	.9375	1.5
869747	3 SDR 1200 I MG	200 in lb-1200 in lb	10 in lb	3/8	18.391	1.375	1.063	.9375	1.5
869755	4 SDR 1800 I MG	300 in lb-1800 in lb	10 in lb	1/2	18.703	1.953	1.422	.9375	2.0
869756	3 SDR 75 MG	15 ft lb-75 ft lb	.5 ft lb	3/8	14.969	1.375	1.063	.9375	1.5
869754	3 SDR 100 MG	20 ft lb-100 ft lb	1 ft lb	3/8	18.438	1.375	1.031	.9375	1.5
869757	4 SDR 150 MG	30 ft lb-150 ft lb	1 ft lb	1/2	19.188	1.953	1.422	.9375	2.0
869758	4 SDR 250 MG	50 ft lb-250 ft lb	2 ft lb	1/2	25.156	1.953	1.422	1.0	3.5
810760	6 SDR 300	50 ft lb-300 ft lb	2.5 ft lb	3/4	28.391	2.688	1.984	2.0	7.8
810597*	6 SDR 600	100 ft lbs-600 ft. lbs.	5 ft lb	3/4	38.75	2.688	1.984	2.0	10.5
810525**	6 SDR 700	100-700 ft. lbs.	5 ft lb	3/4	39.125	2.688	1.984	2.0	16.5

Part No.	Model	Torque Capacity	Steps of Graduation	Square Drive (in.)	A (cm)	B (cm)	C (cm)	D (cm)	Weight (kg)
869774	2 SDR 6 Nm MG	1 Nm-6 Nm	0.1 Nm	1/4	28.5	2.4	2.0	3.1	0.5
869775	2 SDR 20 Nm MG	4 Nm-20 Nm	0.2 Nm	1/4	28.5	2.4	2.0	3.1	0.5
869776	3 SDR 20 Nm MG	4 Nm-20 Nm	0.2 Nm	3/8	30.4	2.4	2.0	3.1	0.5
869782	3 SDR 50 Nm MG	10 Nm- 50 Nm	0.5 Nm	3/8	39.4	3.5	2.7	3.1	0.7
869777	3 SDR 100 Nm MG	20 Nm-100 Nm	0.5 Nm	3/8	39.1	3.5	2.7	3.1	0.7
869797	4 SDR 100 Nm MG	20 Nm-100 Nm	0.5 Nm	1/2	39.1	3.5	2.7	3.1	0.7
869783	3 SDR 140 Nm MG	30 Nm-140 Nm	1 Nm	3/8	47.0	3.5	2.7	3.1	0.7
869798	4 SDR 140 Nm MG	30 Nm-140 Nm	1 Nm	1/2 (3/8 body)	46.4	3.5	3.5	3.1	0.7
869778	4 SDR 200 Nm MG	40 Nm-200 Nm	1 Nm	1/2	49.5	5.0	3.6	3.1	0.9
869779	4 SDR 300 Nm MG	60 Nm-300 Nm	2 Nm	1/2	63.4	5.0	3.6	3.1	1.6
869789	6 SDR 300 Nm MG	60 Nm-300 Nm	2 Nm	3/4	63.4	5.0	3.6	3.1	1.6
810598*	6 SDR 800 Nm	150 Nm-800 Nm	5 Nm	3/4	97.5	6.8	5.0	3.8	4.8

\* Optional extension tube, Part # 853363, can be ordered. Use of the extension requires wrench recalibration.

\*\* The 6 SDR 700 comes from the factory with an extension tube and MUST be used with that tube attached.

## Square Drive Micrometer Adjustable

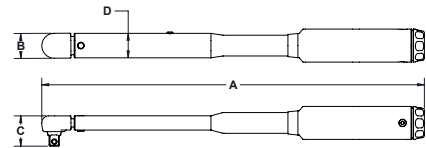
# SD Series



This is the SDR wrench with a fixed square drive rather than a ratchet.

- Accuracy of +/- 4% Indicated Value (from 20% to 100% of capacity) meets or exceeds ASME B107.300 - 2010, ISO 6789, and AS 28431.

Comes with blow molded case.



### SD Fixed Male Square Drive Head Series - English

Part No.	Model	Torque Capacity	Steps of Graduation	Square Drive	A (in.)	B (in.)	C (in.)	D (in.)	Weight (lbs.)
869160	2 SD 50 I MG	10 in lb-50 In lb	1 in lb	1/4"	10.688	0.9219	0.8594	0.9375	1.0
869161	2 SD 150 I MG	30 in lb-150 in lb	2 in lb	1/4"	10.672	0.9219	0.8594	0.9375	1.0
869159	3 SD 200 I MG	40 in lb-200 in lb	2 in lb	3/8"	10.578	0.9219	1.0313	0.9375	1.0
869163	3 SD 750 I MG	150 in lb-750 In lb	5 in lb	3/8"	14.25	0.9375	1.1406	0.9375	1.1
869167	4 SD 150 MG	30 ft lb-150 ft lb	1 ft lb	1/2"	17.719	0.9375	1.2344	0.9375	2.0
810600*	6 SD 600	100 ft lb-600 ft lb	5 ft lb	3/4"	35.391	1.50	1.4531	2.0	8.8

Part No.	Model	Torque Capacity	Steps of Graduation	Square Drive	A (cm)	B (cm)	C (cm)	D (cm)	Weight (kg)
810601*	6 SD 800 Nm	150 Nm-800Nm	5 Nm	3/4"	99.3	5.1	3.7	3.8	3.992

\* Optional extension tube, Part # 853363, can be ordered. Use of the extension requires wrench recalibration.

### Carry and Storage Cases

Strong, durable cases for carrying and storing your SR brand micrometer adjustable torque wrenches. Fits SDR, SD, and CCM series tools.

Part No.	Size	Type	Wrench Range
820122	Small	Molded Plastic	50I-200I, 6 Nm-20 Nm
820123	Medium	Molded Plastic	600I-150 ft. lbs., 50 Nm-200 Nm
820124	Large	Molded Plastic	250 ft. lbs., 300 Nm
820170	Extra Large	Molded Plastic	600-700 ft. lbs., 800 Nm



Each wrench includes molded plastic case.

### WARNING



- Do not exceed rated torque
- Do not use to break fasteners loose
- Periodic recalibration is necessary to maintain accuracy
- Read safety precautions on page 61



## Interchangeable Head Preset

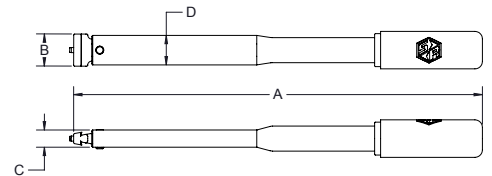


# LTC Series

If we preset the torque value at the factory, we include a Calibration Certificate.

If we do not preset the torque value, you may request a Calibration Certificate.

- The LTC-Series is superb for use on the assembly line AND in field maintenance kits!
- The +/- 4% Accuracy meets or exceeds ASME B107.300 - 2010 and ISO 6789, and provides the quality your customers demand!
- Unique dovetail design transmits the load at right angle from the wrench to the head; exceptional strength and rigidity of connection.
- Light weight new comfort grip provides superior ergonomics, reducing operator fatigue.
- Extension Handle Part No. 853601 extends tool length for wrenches up to 3000 inch pounds. Handle Extension 853538 extends tool length for wrenches larger than 30001.
- LTC 300 | OHT features smaller dimensions for access in tighter spaces.



Part No.	Model	Torque Capacity	A (in.)	B (in.)	C (in.)	D (in.)	Weight (lbs.)
810100	LTC 50 I	10 in lb-50 in lb / 1.2 Nm-6 Nm	6.93	0.75	0.54	0.92	0.529
810011	LTC 150 I	30 in lb-150 in lb / 3.4 Nm-17 Nm	6.93	0.75	0.54	0.92	0.529
810574	LTC 300 I OHT	150 in lb-300 in lb / 17 Nm-34 Nm	6.93	0.75	0.54	0.92	0.579
810016	LTC 300 I	60 in lb-300 in lb / 6.8 Nm-34 Nm	8.92	0.75	0.54	0.92	0.810
810013	LTC 750 I	150 in lb-750 in lb / 17 Nm-85 Nm	12.73	1	0.54	0.92	1.143
810014	LTC 1800 I	360 in lb-1800 in lb / 40.8 Nm-204 Nm	16.18	1.25	0.54	0.92	1.480
810054	LTC ERGO 1800 I	360 in lb-1800 in lb / 40.8 Nm-204 Nm	20.56	1.25	0.54	0.92	2.046
810802	LTC 3000 I *	600 in lb-3000 in lb / 67.79 Nm-338 Nm	20.82	1.5	0.627	1.03	2.51
810334	LTC 3600 I *	720 in lb-3600 in lb / 81.4 Nm-407 Nm	24.33	1.75	0.67	2.01	6.01
810137	LTC 4800 I *	960 in lb -4800 in lb / 108.4 Nm-542 Nm	34.31	1.813	0.67	2.01	7.26

\* Calibrated for 3/8 inch centerline



- Do not exceed rated torque
- Do not use to break fasteners loose
- Periodic recalibration is necessary to maintain accuracy
- Read safety precautions on page 61



# Square Drive Ratchet Preset

# LTCR

## Series

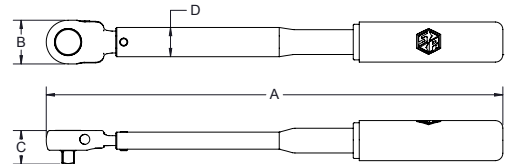
*If we preset the torque value at the factory, we include a Calibration Certificate.*

*If we do not preset the torque value, you may request a Calibration Certificate.*

- Designed specifically for use on production lines where many fasteners are to be tightened to the same torque.
- For preset handle extension order PN 853601 for wrenches of 3000 in. lbs. or less.
- Light weight new comfort grip provides superior ergonomics, reducing operator fatigue.
- Accuracy of +/- 4% meets or exceeds ASME B107.300 - 2010 and ISO 6789, offering consistent assembly quality.
- Wrench can be calibrated using any unit of torque measure.
- Ball bearing rockover assembly assures smooth operation, enhances repeatability, increases cycle life of wrench, and helps control ownership costs.
- Excellent audible and tactile impulse when preset torque is achieved.
- Slide pin ratchet is extremely strong and durable.
- Torque tester must be used to set torque value.



*Combination adjusting and release tool (CART 819117) allows operator to easily adjust the torque on all SR preset wrenches.*



Part No.	Model	Torque Capacity	Drive Size	A (in.)	B (in.)	C (in.)	D (in.)	Weight (lbs.)
810400	LTCR 50   1/4"	10 in lb-50 in lb / 1.2 Nm-6 Nm	1/4"	7.985	0.9678	0.536	0.919	0.667
810401	LTCR 150   1/4"	30 in lb-150 in lb / 3.4 Nm-17 Nm	1/4"	8.017	0.9678	0.536	0.919	0.723
810589	LTCR 150   3/8"	30 in lb-150 in lb / 3.4 Nm-17 Nm	3/8"	8.535	1.347	0.536	0.919	0.921
810058	LTCR 300   3/8"	60 in lb-300 in lb / 6.8 Nm-34 Nm	3/8"	10.483	1.347	0.536	0.919	1.041
810055	LTCR 750   3/8"	150 in lb-750 in lb / 17 Nm-85 Nm	3/8"	14.310	1.347	0.536	0.919	1.477
810060	LTCR 750   1/2"	150 in lb-750 in lb / 17 Nm-85 Nm	1/2"	14.310	1.359	0.536	0.919	1.508
810402	LTCR 1200   3/8"	240 in lb-1200 in lb / 27.2 Nm-136 Nm	3/8"	17.616	1.369	0.536	0.919	1.807
810056	LTCR 1800   1/2"	360 in lb-1800 in lb / 40.8 Nm-204 Nm	1/2"	18.268	1.941	0.536	0.919	2.292
810059	LTCR 3000   1/2"	600 in lb-3000 in lb / 67.8 Nm-339 Nm	1/2"	22.580	1.941	0.627	0.919	3.241
810430	LTCR 3000   3/4"	600 in lb-3000 in lb / 67.8 Nm-339 Nm	3/4"	22.580	1.941	0.627	1.03	3.333
810138	LTCR 3600   3/4"	1200 in lb-3600 in lb / 81.4 Nm-407 Nm	3/4"	27.244	2.688	0.67	2.005	8.217
810151*	LTCR 7200   3/4"	1400 in lb-7200 in lb / 162.6 Nm-813 Nm	3/4"	37.249	2.688	0.67	2.005	10.959

\* Optional Extension Tube Part No. 853363 can be ordered. Use of the extension requires wrench recalibration.



- Do not exceed rated torque
- Do not use to break fasteners loose
- Periodic recalibration is necessary to maintain accuracy
- Read safety precautions on page 61



# Square Drive Preset LTCS Series

- This wrench is identical to the LTCR wrench except it is built with a fixed square drive.
- Adjustments to torque settings can only be made with a Combination Adjusting and Release Tool (CART) to prevent tampering on the production line.

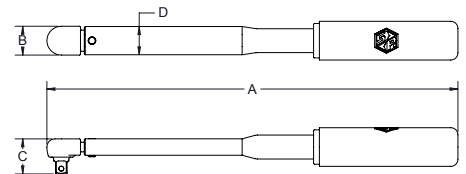
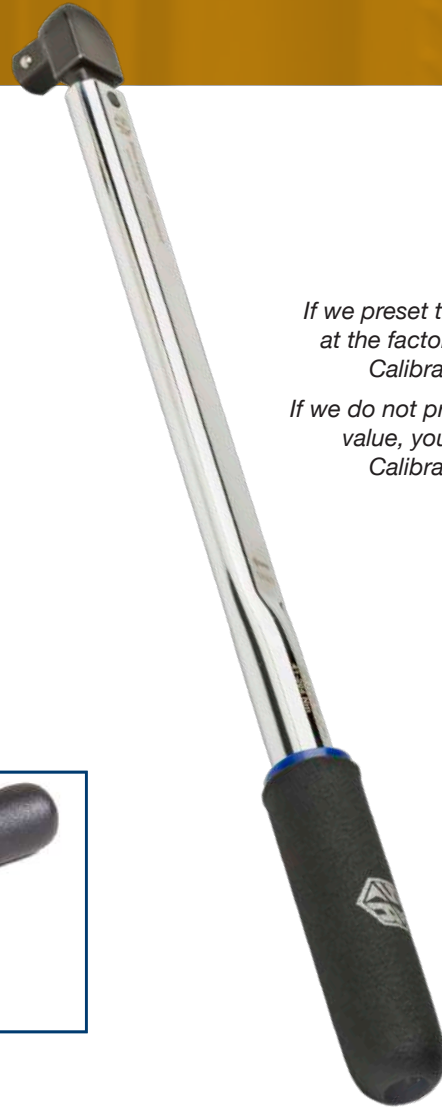
Preset Handle Extension (Part No. 853601) is available to increase reach for limited-access applications for wrenches of 3000 in.lb. capacity and below!



*Use of Extension Handle adds 6 inches in total tool length*

*If we preset the torque value at the factory, we include a Calibration Certificate.*

*If we do not preset the torque value, you may request a Calibration Certificate.*



## LTCS Fixed Male Square Drive Head Series

Part No.	Model	Torque Capacity	Square Drive	A (in.)	B (in.)	C (in.)	D (in.)	Weight (lb.)
810168	LTCS 50 I	10 in lb-50 in lb / 1.2 Nm-6 Nm	1/4"	7.458	0.9375	0.536	0.9193	0.648
810170	LTCS 150 I	30 in lb-150 in lb / 3.4 Nm-17 Nm	3/8"	7.505	0.9375	0.536	0.9193	0.702
810171	LTCS 300 I	60 in lb-300 in lb / 6.8 Nm-34 Nm	3/8"	9.453	0.9375	0.536	0.9193	0.84
810172	LTCS 750 I	150 in lb-750 in lb / 17 Nm-85 Nm	3/8"	13.392	0.9375	0.536	0.9193	0.978
810174	LTCS 1800 I	360 in lb-1800 in lb / 40.8 Nm-204 Nm	1/2"	16.954	0.9375	0.536	0.9193	1.682
810485	LTCS 3600 I	720 in lb-3600 in lb / 80.14 Nm-407 Nm	3/4"	25.051	1.531	0.67	2.005	5.731
810153*	LTCS 7200 I	1400 in lb-7200 in lb / 162.6 Nm-813 Nm	3/4"	35.046	1.5	0.67	2.005	7.503

\* Optional Extension Tube Part No. 853363 can be ordered. Use of the extension requires wrench recalibration.

The existing foam grip must be removed prior to Extension Handle installation

The wrench must be calibrated with the Extension Handle in place to account for added tool length

The Extension Handle must be removed to adjust the torque output setting.



**WARNING**



- Do not exceed rated torque
- Do not use to break fasteners loose
- Periodic recalibration is necessary to maintain accuracy
- Read safety precautions on page 61



## Bidirectional Interchangeable Head Preset



# BLT Series

If we preset the torque value at the factory, we include a Calibration Certificate.

If we do not preset the torque value, you may request a Calibration Certificate.

Bi-directional preset interchangeable head torque wrenches are ideal for applications where clearance and fitment are an issue. The BLT gives you the versatility of turning the wrench over and using it in the ccw direction to achieve final torque.

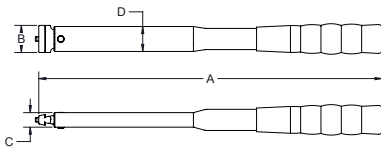
These needs are common in assembly and standardized field maintenance operations, and the BLT-Series tools are superb for these types of applications.

- SR Dovetail Head connects to over 200 SR Interchangeable Heads. All of our interchangeable heads fit on all of our dovetail wrenches, meaning you don't have to buy multiple wrenches and heads in the same torque range to cover all fastener sizes.
- BLT-Series torque wrenches have CW +/- 4% Indicated Value Accuracy and CCW +/- 6% Indicated Value Accuracy from 20% to 100% of capacity, meeting or exceeding the requirements of ASME B107.300-2010 and ISO 6789.
- All of our tools provide torque measurement in the clockwise direction. The BLT preset click wrench measures torque in both clockwise and counter clockwise directions.
- LTC 300 | OHT features smaller dimensions for access in tighter spaces.

### WARNING



- Do not exceed rated torque
- Do not use to break fasteners loose
- Periodic recalibration is necessary to maintain accuracy
- Read safety precautions on page 61



Part No.	Model	Torque Capacity	A (in.)	B (in.)	C (in.)	D (in.)	Weight (lbs.)
874100	BLT 50 I	10 in lb-50 in lb / 1.2 Nm-6 Nm	8.93	0.75	0.54	0.92	0.816
874011	BLT 150 I	30 in lb-150 in lb / 3.4 Nm-17 Nm	8.93	0.75	0.54	0.92	0.816
874016	BLT 300 I	60 in lb-300 in lb / 6.8 Nm-34 Nm	8.93	0.75	0.54	0.92	0.833
874574	BLT 300 I OHT	150 in lb-300 in lb / 6.8 Nm-34 Nm	8.93	0.75	0.54	0.92	0.833
874013	BLT 750 I	150 in lb -750 in lb / 17 Nm-85 Nm	12.78	1.00	0.54	0.92	1.125
874014	BLT 1800 I	360 in lb-1800 in lb / 40.8 Nm-204 Nm	16.22	1.25	0.54	0.92	1.470
874054	BLT 1800 I ERGO	360 in lb-1800 in lb / 40.8 Nm-204 Nm	20.57	1.25	0.54	0.92	1.981
874334	BLT 3600 I *	720 in lb-3600 in lb / 81.4 Nm-407 Nm	24.45	1.75	0.67	2.01	5.968
874137	BLT 4800 I *	960 in lb-4800 in lb / 108.4 Nm-542 Nm	34.34	1.81	0.67	2.01	7.202

\* Calibrated for 3 7/8 inch centerline

# Flat Beam

## M Series

The four most important requirements of a torque wrench, accuracy, reliability, durability, and low ownership cost, are combined into these exceptional tools. Accuracy is literally ground into the wrench. The special alloy steel beam is ground to a rate of deflection with the use of dead weights, rather than a dimensional tolerance. This process is time consuming and very labor intensive, but the result is a tool that remains accurate as long as the beam is intact and the pointer is on zero under no-load condition. The flat shape of the beam insures the wrench remains at a right angle to the fastener, reducing or eliminating side-loading error. This unique taper-grinding distributes stress evenly along the entire length of the beam, extending tool life indefinitely. With a minimum of moving parts, these tools are virtually repair and maintenance free.

### Features

- Incredibly durable design - actual service life frequently measured in decades!
- Very low cost of ownership - exceptional accuracy retention permits extended calibration intervals, and they are virtually maintenance and repair free!
- Ideal for prevailing-torque and destructive testing applications.
- Low mass/low inertia design of pointers helps eliminate reading distortion.
- Memory feature consists of fingers which follow a track in the scale and remain in place to indicate maximum torque achieved.
- Peak torque indicated on scale is accurate, even on destructive testing applications.
- Pivoted handle concentrates load at precise point on lever to assure torque accuracy.
- Meets or exceeds ASME B107.300 - 2010 and ISO 6789.
- Accuracy of all flat beams is +/- 2% of indicated value from 20% to 100% of capacity, in both directions.
- Includes FREE calibration certificate from our ISO/IEC 17025 Accredited Laboratory.

### Crowfoot Adapter

- Gain the significant advantage of our interchangeable head system by attaching the SRA to any fixed square drive wrench.
- Ideal for use when a direct reading torque wrench is required but space is limited.
- Use of an adapter requires calculation of torque output.
- When used with our 1 7/16" (36.5mm) Interchangeable Heads the adapter length will be 3" (76.3mm).

### Crowfoot Adapter

#### Part

Number	Model	Description
850653	SRA-¾	¾ Female-Male Dovetail
850655	SRA-½	½ Female-Male Dovetail



**WARNING**



- Do not exceed rated torque
- Do not use to break fasteners loose
- Periodic recalibration is necessary to maintain accuracy
- Read safety precautions on page 61

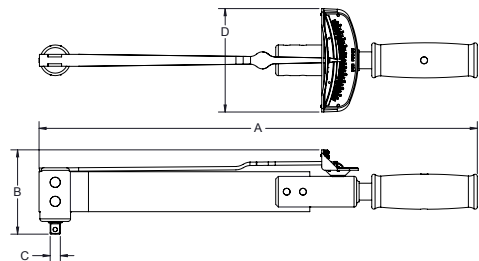
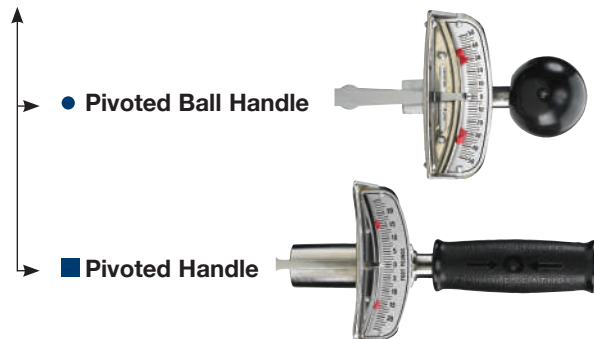


### Flat Beam Memory Series - English

Part No.	Model	Torque Capacity	Steps of Graduations	Square Drive	Lever Arm Distance	Dimensions (in.)				Weight
						A	B	C	D	
850233	M 32 IO	0-32 in. ozs.	2 in. ozs.	¼ in.	6.0 in.	6.875	1.0469	0.25	2.25	0.2 lbs.
850254	M 80 IO	0-80 in. ozs.	5 in. ozs.	¼ in.	6.2 in.	6.844	1.4844	0.25	2.25	0.25 lbs.
850202	M 160 IO	0-160 in. ozs.	10 in. ozs.	¼ in.	6.0 in.	6.844	1.4844	0.25	2.25	0.25 lbs.
850188	M 10 I	0-10 in. lbs.	½ in. lb.	¼ in.	6.0 in.	6.844	1.50	0.25	2.25	0.25 lbs.
850222	M 25 I	0-25 in. lbs.	1 in. lb.	⅜ in.	6.3 in.	6.844	1.7813	0.375	2.25	0.4 lbs.
850242	M 50 I	0-50 in. lbs.	2 in. lbs.	⅜ in.	6.0 in.	6.875	1.7032	0.375	2.25	0.4 lbs.
850191	M 100 I	0-100 in. lbs.	5 in. lbs.	⅜ in.	6.5 in.	7.4375	1.7032	0.375	2.25	0.4 lbs.
850211	M 200 I	0-200 in. lbs.	10 in. lbs.	⅜ in.	9.0 in.	7.4375	1.7032	0.375	2.75	0.5 lbs.
850228	M 300 I	0-300 in. lbs.	10 in. lbs.	⅜ in.	13.5 in.	16.0	3.797	0.375	3.797	2.75 lbs.
850246	M 600 I	0-600 in. lbs.	25 in. lbs.	⅜ in.	13.5 in.	16.0	3.797	0.375	3.797	2.75 lbs.
850247	M 600 I	0-600 in. lbs.	25 in. lbs.	½ in.	13.5 in.	16.0	3.797	0.5	3.797	2.75 lbs.
850195	M 1200 I	0-1200 in. lbs.	50 in. lbs.	½ in.	15.0 in.	17.50	3.797	0.5	3.797	2.75 lbs.
850205	M 1800 I	0-1800 in. lbs.	50 in. lbs.	½ in.	18.0 in.	20.563	3.797	0.5	3.797	3.75 lbs.
850220	M 25	0-25 ft. lbs.	1 ft. lb.	⅜ in.	13.5 in.	16.0	3.797	0.375	3.797	2.75 lbs.
850240	M 50	0-50 ft. lbs.	2 ft. lbs.	⅜ in.	13.5 in.	16.0	3.797	0.375	3.797	2.75 lbs.
850241	M 50	0-50 ft. lbs.	2 ft. lbs.	½ in.	13.5 in.	16.0	3.797	0.5	3.797	2.75 lbs.
850190	M 100	0-100 ft. lbs.	5 ft. lbs.	½ in.	15.0 in.	17.50	3.797	0.5	3.797	2.75 lbs.
850198	M 150	0-150 ft. lbs.	5 ft. lbs.	½ in.	18.0 in.	20.563	3.797	0.5	3.797	3.75 lbs.
850227	M 300	0-300 ft. lbs.	10 ft. lbs.	¾ in.	30.0 in.	34.25	5.156	0.75	3.797	10.75 lbs.

### Flat Beam Memory Series - Newton Metre

Part No.	Model	Torque Capacity	Steps of Graduations	Square Drive	Lever Arm Distance	Dimensions (cm)				Weight
						A	B	C	D	
855276	M 110 cNm	0-110 cNm	5 cNm	¼ in.	152.4 mm	17.37	1.59	0.64	5.72	0.5625 kg
855281	M 2.5 Nm	0-2.5 Nm	.1 Nm	⅜ in.	158.8 mm	17.37	3.12	0.95	5.72	0.765 kg
855282	M 5 Nm	0-5 Nm	.2 Nm	⅜ in.	152.4 mm	17.37	3.12	0.95	5.72	0.765 kg
855283	M 12 Nm	0-12 Nm	.5 Nm	⅜ in.	165.1 mm	18.87	3.12	0.95	5.72	0.855 kg
855284	M 22 Nm	0-22 Nm	1 Nm	⅜ in.	228.6 mm	25.15	3.12	0.95	6.99	1.125 kg
855285	M 34 Nm	0-34 Nm	1 Nm	⅜ in.	340.4 mm	40.64	6.17	0.95	9.63	6.1875 kg
855287	M 70 Nm	0-70 Nm	2 Nm	⅜ in.	342.9 mm	40.64	6.17	0.95	9.63	6.1875 kg
855288	M 70 Nm	0-70 Nm	2 Nm	½ in.	342.9 mm	40.64	6.50	1.27	9.63	6.1875 kg
855289	M 140 Nm	0-140 Nm	5 Nm	½ in.	381.0 mm	40.64	6.50	1.27	9.63	6.1875 kg
855290	M 210 Nm	0-210 Nm	10 Nm	½ in.	457.2 mm	52.22	6.50	1.27	9.63	8.4375 kg
855292	M 410 Nm	0-410 Nm	10 Nm	¾ in.	762.0 mm	87.00	10.59	1.91	20.32	24.1875 kg

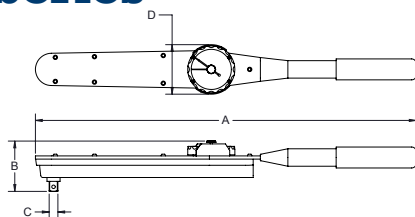




## Industrial Dial

# IDW

## Series



- Oversized single scale dial face is extremely easy to read and helps to eliminate parallax error.
- Heavy duty dial guard protects against breakage.
- Memory indicator is provided on each wrench and remains at the maximum torque achieved for positive verification.
- Each wrench comes in its own custom storage box.
- Wrench can be used in both the left and right hand direction.
- Accuracy of +/- 3% Indicated Value (from 20% to 100% of capacity) meets or exceeds ASME B107.300 - 2010, and ISO 6789.
- A neoprene rubber grip is provided for comfort and to insure proper hand placement for maximum accuracy; not available on 3/4" and 1" sq. dr. models.
- Extension handle included on 600 ft.-lb/800Nm and greater capacity models for ergonomic advantage.
- Includes FREE NIST-traceable tabulated certification!

### Industrial Dial Wrench Series – English

Part No.	Model	Torque Capacity	Steps of Graduation	Square Drive	Weight:	Length (in.):	Dial Diameter (in.)
815700	IDW 30 I	6-30 in. lbs.	1 in. lb.	¼ in.	1.2 lbs.	10.25	2.875
815719	IDW 50 I	10-50 in. lbs.	2 in. lbs.	¼ in.	1.2 lbs.	10.25	2.875
815701	IDW 150 I	30-150 in. lbs.	5 in. lbs.	¾ in.	1.2 lbs.	10.25	2.875
815702	IDW 300 I	60-300 in. lbs.	5 in. lbs.	¾ in.	1.2 lbs.	10.25	2.875
815703	IDW 600 I	120-600 in. lbs.	10 in. lbs.	¾ in.	1.4 lbs.	12.25	2.875
815704	IDW 150	30-150 ft. lbs.	2 ft. lb.	½ in.	2.8 lbs.	20.75	2.875
815705	IDW 250	50-250 ft. lbs.	5 ft. lb.	½ in.	2.8 lbs.	20.75	2.875
815706*	IDW 600	120-600 ft. lbs.	10 ft. lbs.	¾ in.	7.5 lbs.	46.50	2.875
815722*	IDW 1000	200-1000 ft. lbs.	10 ft. lbs.	1 in.	7.5 lbs.	46.50	2.875

### Industrial Dial Wrench – Newton Metre

815720	IDW 6 Nm	1.2-6 Nm	.25 Nm	¼ in.	0.5443 Kg	26.162 Cm	7.30 cm
815707	IDW 15 Nm	3-15 Nm	.25 Nm	¾ in.	0.5443 Kg	26.162 Cm	7.30 cm
815708	IDW 35 Nm	7-35 Nm	.5 Nm	¾ in.	0.5443 Kg	26.162 Cm	7.30 cm
815709	IDW 70 Nm	14-70 Nm	1 Nm	¾ in.	0.6350 Kg	31.242 Cm	7.30 cm
815710	IDW 200 Nm	40-200 Nm	2.5 Nm	½ in.	1.27 Kg	52.837 Cm	7.30 cm
815711	IDW 350 Nm	70-350 Nm	5 Nm	½ in.	1.27 Kg	52.837 Cm	7.30 cm
815712*	IDW 800 Nm	160-800 Nm	10 Nm	¾ in.	3.40 Kg	118.11 Cm	7.30 cm
815723*	IDW 1300 Nm	260-1300 Nm	25 Nm	1 in.	7.71 Kg	181.61 Cm	7.30 cm

\* Includes Extension Handle

NOTE: Torque output on a dial wrench is NOT impacted by use of the handle. However, the addition of a crowfoot adapter does change the tool output and must be considered in the torque equation to ensure accuracy.



- Do not exceed rated torque
- Do not use to break fasteners loose
- Periodic recalibration is necessary to maintain accuracy
- Read safety precautions on page 61



**Compatible with  
T-Handle 814848**

## Preset Screwdriver

# P Series

- Exceptionally smooth rotation
- Ergonomically friendly: requires only 18 degrees of rotation to achieve preset torque value. Other brands require 36 degrees, 45 degrees, or even 60 degrees to achieve target torque
- Perfect for assembly of electronic components and precision mechanical products!
- Ideal for use in field maintenance kits - electro-static discharge compliant when ESD practices are used.
- Clutch releases automatically when preset torque attained - no overtorquing.
- Anti-backlash design for repeatability.
- Long shaft allows operator to reach limited-access applications.
- Accuracy of +/- 6% (from 20% to 100% of capacity) meets or exceeds ASME B107.300 - 2010 and ISO 6789 requirements.
- Bi-directional versatility - CW and CCW operation.
- Uses standard bits, adapters, and sockets.
- Torque value can be set using any unit of torque measure.
- To set the torque value use a torque tester and a 1/4" hex drive.

## Color code all your screwdrivers

When you place your order, just mention you want colors and we will send a package of five easy-to-apply heat shrink sleeves. Color code bands are 1/2" in length.



Part No.	Package Contents
816734	Multi-color (1 each)
816735	Blue (5)
816736	Yellow (5)
816737	Red (5)
816738	White (5)
816739	Green (5)

Specifications	P6-2H Part No. 810501	P20-2H Part No. 810502	P40-2H Part No. 810503
<b>Capacity</b>	20-100 in. oz. 1.25-6.25 in. lb.	40-240 in. oz. 4-20 in. lb.	115.2-576 in. oz. 5-40 in. lb.
Length (less bit)	6"	6"	6"
Grip Diameter	1.57"	1.57"	1.57"
Grip Length	4.43"	4.43"	4.43"
Weight	0.5 lb.	0.5 lb.	0.5 lb.
Drive Size	1/4" Female Hex	1/4" Female Hex	1/4" Female Hex

*If we preset the torque value at the factory, we include a Calibration Certificate.  
If we do not preset the torque value, you may request a Calibration Certificate.*

### **WARNING**



- Do not exceed rated torque
- Do not use to break fasteners loose
- Periodic recalibration is necessary to maintain accuracy
- Read safety precautions on page 61

# Micrometer Adjustable Torque Screwdriver

# CAL 36/4 Series

- Accuracy of +/- 6% Indicated Value (from 20% to 100% of capacity) meets or exceeds ASME B107.300 - 2010 and ISO 6789.
- Incredibly durable! Many users have experienced a service life of 10+ years!
- Operators cannot overtorque - clutch releases at set torque.
- Anti-backlash design for repeatability.
- To operate, simply dial in torque and insert bit.
- Bi-directional CW/CCW versatility.
- Polished aluminum exterior.
- Scales clearly engraved on shaft and magnified for ease of reading.
- Includes FREE calibration certificate from our ISO/IEC 17025 Accredited laboratory! Can be ordered with certification for English or Metric units of measure. (Use Part No. 810017 for Nm certification on Cal 36/4.)
- Uses standard bits, adapters, and sockets.

## Specifications

Capacity	2-36 in. lbs./2-4 Nm
Graduation	2 in. lb./2 Nm
Length (less bit)	7.297"
Grip Diameter	1.375"
Weight	0.5 lb.
Drive Size	1/4" Female Hex

## CAL 36/4 Part No. 810587

## CAL 40 Part No. 810477

Capacity	3-40 kgf•cm.
Graduation	2 kgf•cm
Length (less bit)	7.609"
Grip Diameter	1.375"
Weight	0.5 lb.
Drive Size	1/4" Female Hex



**CAL 36/4K  
Screwdriver Kit**  
29 Piece Kit

## Part No. 810568

Contains 1 each of the listed bits and a CAL 36/4 screwdriver

Hex 5/64	Slotted 8-10	Torx T20
Hex 3/32	Slotted 12-14	Torx T25
Hex 7/64	Socket Adapter 1/4	Torx T30
Hex 1/8	Bit Holder 1/4	Torx T40
Hex 5/64	Phillips #0	Sq. Recess 0
Posidriv #1	Phillips #1	Sq. Recess 1
Posidriv #2	Phillips #2	Sq. Recess 2
Slotted 0-1	Phillips #3	Sq. Recess 3
Slotted 3-4	Torx T10	
Slotted 5-6	Torx T15	

**Includes Custom Case**

## Part No. 810588

Part No.	Description
810587	CAL 36/4 Screwdriver
819953	1/4" Hex to 1/4" Sq. Drive
809449	No. 1 Phillips Power Bit
809467	No. 2 Phillips Power Bit
809434	No. 2 Slotted Power Bit
809448	No. 4 Slotted Power Bit

**Includes Custom Case**

## EMTSK 36/4 Screwdriver Kit

6 Piece Kit



## WARNING



- Do not exceed rated torque
- Do not use to break fasteners loose
- Periodic recalibration is necessary to maintain accuracy
- Read safety precautions on page 61



## Micrometer Adjustable Torque Screwdriver

# ExacTorq® Series 1

### Exact Torque Adjustment Using DigiLock Control Mechanism

Gone are the days of estimating torque. A simple twist of ExacTorq's end-mounted DigiLock mechanism sets your torque levels in exact, single digit increments. The positive locking detent secures your selection.

### Enhance Comfort and Accuracy with Advanced Ergonomics

Enhanced comfort translates into enhanced accuracy. The ExacTorq® features a tri-lobular handle design. This gives users enhanced leverage, plus rounded surfaces for comfort and superior grip control. With each turn, this unique design involves only major muscle groups to reduce strain and potential repetitive-motion injury. Additionally, the ExacTorq® is comfortable in even the smallest of hands, performing flawlessly when used by women and men on the assembly line.

### Features

- DigiLock Control Mechanism revolutionizes manual torque adjustment.
- Positive locking detent secures selected torque value.
- Can be used in both right and left hand directions.
- Designed to meet or exceed ASME B107.300 - 2010 and ISO 6789 specifications, each ExacTorq ships with a calibration certificate from our ISO/IEC 17025 Accredited Laboratory.
- Operator cannot over torque. Clutch releases automatically when desired torque has been achieved.
- Uses standard bits, sockets and adapters.
- Anti-backlash design enhances repeatability.
- Accuracy of +/- 6% Indicated Value.

### **WARNING**



- Do not exceed rated torque
- Do not use to break fasteners loose
- Periodic recalibration is necessary to maintain accuracy
- Read safety precautions on page 61

### Specifications

Part Number  
Capacity  
Graduation  
Length (less bit)  
Weight  
Drive Size

### ExacTorq 100

810045  
20-100 in. oz.  
1 in. oz.  
6.4219"  
0.4 lbs  
¼ in. Female Hex

### ExacTorq 74

810046  
15-74 cNm  
1cNm  
6.5469"  
0.4 lbs  
¼ in. Female Hex

# TD Series



## Digital Torque & Angle Screwdriver

- Modes of operation: Peak, TAM, T2A, Residual
- Meets/exceeds ASME B107.300-2010 and ISO 6789
- Bi-directional +/- 2% Indicated Value from 5% to 100% of tool capacity.
- The display back light is visible when torque is applied. Displays the torque and angle value on the digital display on the screwdriver.
- Visible from any angle, light band on the driver turns yellow, then green, the driver beeps, and the handle vibrates when target torque is achieved.
- Female and male hexagon versions as well as square drive version gives you flexibility to meet all of your torque driver application needs.
- ESD Compliant when grounding strap is properly worn.
- Powered by 1 AA NiMH battery (two included with driver).
- Compatible with NiMH batteries only.
- Units of measure: in-oz, in-lb, ft-lb, cNm, NM, cmkg
- CE and ROHS compliant



*Comes with blow molded case.*

*Light bands around the torque driver nose provide visual guidance.*

*Green = OK  
Red = NOK*



Exacta TD Series Digital Torque & Angle Screwdriver					
Part No.	Model	Torque Capacity	Overall Length	Weight w/ battery	Drive Style
10775	TD 80 1/4" Female Hexagon	4-80 in lb	7.5 in	8 oz	Fem. Hex
10776	TD 80 1/4" Male Square	4-80 in lb	7.5 in	8 oz	Male Sq. Dr.
10777	TD 100 1/4" Female Hexagon	5-100 in oz	7.5 in	8 oz	Fem. Hex

Accessories	
10740	4-Slot Battery Charger
10741	8-Slot Battery Charger
10769	L-Grip Handle (for use with 80 in. lb. models)



Powered by 1 NiMH AA battery (two included with driver).



Optional L-Grip handle for use with 80 in. lb. models

### WARNING



- Do not exceed rated torque
- Do not use to break fasteners loose
- Periodic recalibration is necessary to maintain accuracy



PM-15

## Preset Screwdriver

# PM

## Series

*If we preset the torque value at the factory, we include a Calibration Certificate.*

*If we do not preset the torque value, you may request a Calibration Certificate.*

- Perfect for assembly of electronic components and precision mechanical products!
- Ideal for use in field maintenance kits - electro-static discharge compliant when ESD practices are used.
- Clutch releases automatically when preset torque attained - no overtorquing.
- Anti-backlash design for repeatability.
- Long shaft allows operator to reach limited-access applications.
- Accuracy of +/- 6% (from 20% to 100% of capacity) meets or exceeds ASME B107.300 - 2010 and ISO 6789 requirements.
- Bi-directional versatility - CW and CCW operation.
- Uses standard bits, adapters, and sockets.
- Torque value can be set using any unit of torque measure.



PM-36

### Specifications

	<b>PM-5</b>	<b>PM-15</b>	<b>PM-36</b>
<b>Part No.</b>	810007	810064	810563
<b>Capacity</b>	20-100 in. oz. 1.25-6.25 in. lb.	48-240 in. oz. 3-15 in. lb.	115.2-576 in. oz. 7.2-36 in. lb.
<b>Length (less bit)</b>	5.2656"	6.3281"	7.1563"
<b>Grip Diameter</b>	0.7656"	1.0313"	1.2344"
<b>Grip Length</b>	3"	3"	
<b>Weight</b>	0.25 lb.	0.3 lb.	0.5 lb.
<b>Drive Size</b>	1/4" Female Hex	1/4" Female Hex	1/4" Female Hex

### Color code all your screwdrivers

When you place your order, just mention you want colors and we will send a package of five easy-to-apply heat shrink sleeves. Color code bands are 1/2" in length.

<b>Part No.</b>	<b>Package Contents</b>
816734	Multi-color (1 each)
816735	Blue (5)
816736	Yellow (5)
816737	Red (5)
816738	White (5)
816739	Green (5)



PM-5

### WARNING



- Do not exceed rated torque
- Do not use to break fasteners loose
- Periodic recalibration is necessary to maintain accuracy
- Read safety precautions on page 61

# Calibration

Becoming ISO/IEC 17025 accredited with one calibration station is one thing. Consistently repeating results at twelve stations and remaining within your uncertainty budget is another. No small detail can be overlooked. To eliminate the effect of side-loads, we designed our transducers to have bearings to support the working end. From 1 inch pound to 600 foot pounds we designed our transducers to have a common mounting footprint. To ensure +/- .25% indicated value accuracy, our System 8 instrument stores a 20-point calibration table for each transducer.

Whether you are testing tools in the lab or on the plant floor, our System 8 and TorqTronics 2 are designed to test most, if not all common, assembly tools. This includes torque controlled power tools. Both of these testers come with our "Fail Safe Engineering" protocol that notifies the operator when the transducer has been stretched beyond 120% of its rated capacity.

We use our test equipment every day and invite you to do the same.

<b>System 8 Digital Torque Testers</b> .....	52
<b>TT, TT-QC, TT-L Series Static Transducers</b> .....	54
<b>Torq-Tronics 2® Digital Torque Tester</b> .....	56
<b>New Veritorq 2</b> .....	58
<b>RDF Series Rundown Fixtures</b> .....	59
<b>TTM 4.0 Torque Tool Manager Calibration and Certification Software</b> .....	59
<b>Mechanical Loaders and Accessories</b> .....	60



**Sturtevant  
Richmont**

# ***System 8***<sup>®</sup>

## **Digital Torque Tester**

*Our most accurate digital  
torque tester with Fail Safe  
Engineering!*



# The ultimate in torque tool calibration.

The SYSTEM 8 Digital Torque Tester is much more than a torque calibration unit. It is a well-designed system engineered to turn uncertainties into certainties with:

- Accuracy to +/- .25% of Indicated Value from 10% to 100% of capacity.
- A wide range of available transducers from 2.5 inch oz to 2000 ft. lbs.
- Floating decimal point, 6 digit display is easy to read
- Highly visible display with 6 digit floating decimal point provides superior resolution.
- Fail Safe Engineering over capacity and alert tracking.
- Greater accuracy and durability with simplicity and ease of operation
- Selectable operation modes for testing all but impact tools.

Like all Sturtevant Richmond products, the System 8 meets or exceeds the following standards:

- ASME B107.300 - 2010 Electronic Tester, Hand Torque Tools
- ISO 5393 Rotary tools for threaded fasteners- products test methods.
- ASME B107.4M Driving and Spindle Ends for Portable Hand, Impact, Air, and Electric Tools (Percussion Tools Excluded).
- ISO 1773 Assembly Tools for Bolts and Screws – Driving Squares for Power Socket Wrenches and Hand Socket Wrenches.
- ISO 1774-2 Assembly Tools for Bolts and Screws – Driving Squares for power socket tools

System 8 display has a floating point decimal resolution showing six digits throughout. Combine that with an accuracy of 0.25% (indicated value) from 10% to 100% and System 8 capabilities give you control of your torque testing program.

The new System 8<sup>®</sup> line of Digital Torque Testers is ideal for interim or daily torque testing programs for clicker torque wrenches, camover torque tools, torque screwdrivers, and non-impact power tools.

## Features and Characteristics

- Tests in both clockwise and counterclockwise directions.
- Four modes of operation - Track, Peak, Initial Peak and Power Tool - provide excellent versatility.
- Units of measure include English, Standard International and Metric.
- 999 records that can be downloaded
- Works with Torque Tool Manager 4 for calibration/ documentation.
- Red/Green LED indicates whether a measurement is within the target torque value.
- Includes FREE certificate of calibration from our ISO/IEC 17025 Accredited Laboratory!
- Includes 120-240 VAC to 6 VDC screw on power supply for security during power tool testing.
- Has the option to run on four AA NiMH rechargeable batteries. Batteries sold separately. Quick charge unit is available.
- Includes a rugged protective case for storage and transit.
- Power Tool mode has ten filters and will accurately test all clutch type and pulse tools.

## Ordering Information

Part No.	Model	Description
10600	System 8	System 8 Digital Torque Tester
10601	Transducer Switch Module	Transducer Switch Module
10740	4-Slot Battery Charge Unit	4-Slot AC powered external battery charging unit
10741	4-Slot Battery Charge Unit	4-Slot AC powered external battery charging unit
816261	4 NiMH Batteries	4-pack, AA 2300 mAh rechargeable NiMH batteries
21742	System 8 Power Supply	System 8 Power Supply
21175	RS232 Cable	RS232 Computer Connection Cable

# Static Transducers

## TT and STT Series

Sturtevant Richmont is proud of our flexible transducers for the System 8 and our legacy System 4/5/6—with the legendary Sturtevant Richmont quality built in!

Sturtevant Richmont transducers now come in four designs; two flanged designs for those with existing systems that are expanding their line or using an SR Mechanical Loader, a Quick Connect design for use with our 1000 and 2000 pound capacity Mechanical Loaders, and a new “L” design that incorporates its’ own mounting bracket for rapid horizontal or vertical mounting.

To obtain additional information on these transducers and their use with current and legacy systems, visit. [www.srtorque.com](http://www.srtorque.com)



- Traditional SR hex flange style
- Can be mounted to ML 250 and ML 600 Mechanical Loaders.
- Can be Mounted to Quad Plate for multiple mounting on ML 250.
- Requires detachable cable Part No. 10293. (Except TT 25IO, 1000 and 2000 Series)
- Smaller sizes (up to 400 in. oz. capacity) can be mounted to SSMB, STMB, or UMB brackets.
- Larger sizes (500 ft. lbs. and above) can be mounted on UMB L-bracket.



### WARNING



- Do not exceed rated torque
- Do not use to break fasteners loose
- Periodic recalibration is necessary to maintain accuracy
- Read safety precautions on page 61

#### Torque Range

Part No.	Model	Drive	in.ozs.	in.lbs.	cNm	kgf•Cm
10009*	TT 25IO	.25" Hex Male	2.5–25	0.16–1.6	1.77–17.7	0.18–1.8
10285	STT 10I	.25" Hex Male	16–160	1–10	11.3–113	1.15–11.5
Part No.	Model	Drive	in.lbs.	ft. lbs	Nm	kgf. Cm
10286	STT 50I	.25" Hex Male	5–50	.4–4	.56–5.6	5.6–57
10287	STT 100I	.375" Hex Male	10–100	.83–8.3	1.13–11.3	11.5–115
10288	STT 300I	.375" Hex Male	30–300	2.5–25	3.4–34	34.5–345
10289	STT80	.5" Square Female	96–960	8–80	10.8–108.5	110.6–1106
10290	STT150	.5" Square Female	180–1800	15–150	20.3–203.4	207.4– 2073.8
10291	STT250	.75" Square Female	300–3000	25–250	34–340	345.6–3456.4
Part No.	Model	Drive	ft. lbs.	Nm	Kgf. M	
10292	STT 600	.75" Square Female	60–600	81.3–813.5	8.3–83	
10026*	TT 1000	1" Square Female	100–1000	135.6–1355.8	14–138.2	
10027*	TT 2000	1" Square Female	200–2000	271.2–2712	28–276.5	

\*Cable included. All other transducers require additional cable (P/N 10293).

## QC Transducers

- Quick Connect System that can be mounted to ML 1000 and ML 2000 Mechanical Loaders.
- Removal of adapter plate permits use with ML 250 (250 ft. lbs. capacity and below).
- Requires detachable cable Part No. 10293. (Except TT-QC 2510, 1000 and 2000 Series)

Part No.	Model	Drive	Torque Range			
			in.ozs.	in.lbs.	cNm	kgf•Cm
10211*	TT-QC 2510	.25" Hex Male	2.5–25	0.16–1.6	1.77–17.7	0.18–1.8
10300	STT-QC 101	.25" Hex Male	16–160	1–10	11.3–113	1.15–11.5
Part No.	Model	Drive	in.lbs.	ft. lbs	Nm	kgf. Cm
10301	STT-QC 501	.25" Hex Male	5–50	.4–4	.56–5.6	5.6–57
10302	STT-QC 1001	.375" Hex Male	10–100	.83–8.3	1.13–11.3	11.5–115
10303	STT-QC 3001	.375" Hex Male	30–300	2.5–25	3.4–34	34.5–345
10304	STT-QC 80	.5" Square Female	96–960	8–80	10.8–108.5	110.6–1106
10305	STT-QC 150	.5" Square Female	180–1800	15–150	20.3–203.4	207.4– 2073.8
10306	STT-QC 250	.75" Square Female	300–3000	25–250	34–340	345.6–3456.4
Part No.	Model	Drive	ft. lbs.	Nm	Kgf. M	
10307	STT-QC 600	.75" Square Female	60–600	81.3–813.5	8.3–83	
10209*	TT-QC 1000	1" Square Female	100–1000	135.6–1355.8	14–138.2	
10210*	TT-QC 2000	1" Square Female	200–2000	271.2–2712	28–276.5	

\*Cable included. All other transducers require additional cable (P/N 10293).



- Do not exceed rated torque
- Do not use to break fasteners loose
- Periodic recalibration is necessary to maintain accuracy
- Read safety precautions on page 61

## L Series Transducers

- Built-in L-bracket for mounting perpendicular to your surface.
- Requires detachable cable Part No. 10293.
- Mounting holes drilled for 5/16" bolts, 3.25" on center.

Part No.	Model	Drive	Torque Range			
			in.ozs.	in.lbs.	cNm	kgf•Cm
10257	STT-L 101	.25" Hex Male	16–160	1–10	11.3–113	1.15–11.5
Part No.	Model	Drive	in.lbs.	ft. lbs	Nm	kgf. Cm
10258	STT-L 501	.25" Hex Male	5–50	.4–4	.56–5.6	5.6–57
10259	STT-L 1001	.375" Hex Male	10–100	.83–8.3	1.13–11.3	11.5–115
10260	STT-L 3001	.375" Hex Male	30–300	2.5–25	3.4–34	34.5–345
10261	STT-L 80	.5" Square Female	96–960	8–80	10.8–108.5	110.6–1106
10262	STT-L 150	.5" Square Female	180–1800	15–150	20.3–203.4	207.4– 2073.8
10263	STT-L 250	.75" Square Female	300–3000	25–250	34–340	345.6–3456.4
Part No.	Model	Drive	ft. lbs.	Nm	Kgf. M	
10264	STT-L 600	.75" Square Female	60–600	81.3–813.5	8.3–83	



# Torq-Tronics 2<sup>®</sup>

## Digital Torque Tester Series



The new Torq-Tronics 2 with Fail Safe Engineering takes your quality to a new level.

Accuracy of 0.5% (indicated value) from 10% to 100% of capacity and Torq-Tronics 2 capabilities provide greater control of your torque testing program.

The new Torq-Tronics 2<sup>®</sup> line of Digital Torque Testers is ideal for interim or daily torque testing programs for clicker torque wrenches, camover torque tools, torque screwdrivers, and non-impact power tools.

- Greater accuracy and durability with simplicity and ease of operation
- Highly visible display in any lighting
- 6 digit floating decimal point for superior resolution

Like all Sturtevant Richmont products, Torq-Tronics 2 meets or exceeds the following International and American standards:

- ASME B107.300 - 2010 Electronic Tester, Hand Torque Tools
- ISO 5393 Rotary tools for threaded fasteners- Performance test methods.
- ASME B107.4M Driving and Spindle Ends for Portable Hand, Impact, Air, and Electric Tools (Percussion Tools Excluded).
- ISO 1773 Assembly Tools for Bolts and Screws – Driving Squares for Power Socket Wrenches and Hand Socket Wrenches.
- ISO 1774-2 Assembly Tools for Bolts and Screws – Driving Squares for power socket tools



- Do not exceed rated torque
- Do not use to break fasteners loose
- Periodic recalibration is necessary to maintain accuracy
- Read safety precautions on page 61

## Features and Characteristics

- Accuracy of +/- .5% of Indicated Value from 10% to 100% of rated capacity. Meets or exceeds requirements of ASME B107.300-2010.
- Tests in both clockwise and counterclockwise directions.
- Four modes of operation - Track, Peak, Initial Peak and Power Tool.
- Units of measure include English, Standard International and metric.
- Units of 300 inch-pound (34 Nm) capacity and below are optimized for bench mounting; larger units may be mounted vertically or horizontally for better safety and efficiency
- Memory stores up to 999 records that can be downloaded to Hyper-Terminal or terminal type program or serial logger program included on the USB stick to create testing reports and data storage.
- Four line vacuum florescent display (VFD) is easy to read.
- Red/Green LED indicates whether a measurement is within the target torque value.
- Built with Fail Safe Engineering.
- Includes 120-240 VAC to 6 VDC screw on power supply for security during power tool testing.
- Runs on four AA NiMH rechargeable batteries. Batteries sold separately. Quick charge unit is available.
- Includes a rugged protective case for storage and transit.
- Power Tool mode has ten filters and will accurately test all clutch type and pulse tools.

Part No.	Model Designation	Description	Drive Size
10691	Torq-Tronics 2 10l	Digital Torque Tester 1 Nm / 10 in.lb	¼”M Hex
10692	Torq-Tronics 2 50l	Digital Torque Tester 6 Nm / 50 in.lb	¼”M Hex
10693	Torq-Tronics 2 100l	Digital Torque Tester 12 Nm / 100 in.lb	3/8”M Hex
10694	Torq-Tronics 2 300l	Digital Torque Tester 34 Nm / 300 in.lb	3/8”M Hex
10695*	Torq-Tronics 2 80	Digital Torque Tester 109Nm / 80 ft.lb	½”F Sq.
10696*	Torq-Tronics 2 150	Digital Torque Tester 201 Nm / 150 ft.lb	½”F Sq.
10697**	Torq-Tronics 2 250	Digital Torque Tester 339 Nm / 250 ft.lb	¾”F Sq.
10698**	Torq-Tronics 2 600	Digital Torque Tester 814 Nm / 600 ft.lb	¾”F Sq.

\*Comes with .375” or 3/8 inch adapter at no additional charge. - Part number 870777

\*\* Comes with .5” or 1/2 inch adapter at no additional charge. - Part number 870778

Part No.	Model Designation	Description
870776	Adapter, .25” F	Adapter, .25” Female Square to .375” Male Square
870777	Adapter, .375 F	Adapter, .375” Female Square to .5” Male Square
870778	Adapter, .5” F	Adapter, .5” Female Square to .75” Male Square
10740	4-Slot Battery Charging Unit	4-slot AC powered external battery charging unit
10741	4-Slot Battery Charging Uni8	8-slot AC powered external battery charging unit
816261	4 AA NiMH Batteries	4-pack, AA 2300 mAh rechargeable NiMH batteries
10599	TTM 4.0	Torque Tool Manager Software
10230	Bracket, Single	Single Stand, holds one Torq-Tronics upright
10231	Bracket, Dual	Dual Stand, holds two Torq-Tronics units upright
21742	Torq-Tronics 2 Power Supply	Torq-Tronics 2 Power Supply
21175	RS232 Cable	RS232 Computer Connection Cable



## Digital Torque Tester

# VeriTorg<sup>®</sup> 2 Series

- Operation Modes: Track, Click and Dial accommodates testing clicker, cam-over, and torque screwdriver testing.
- Clockwise and counter-clockwise test capability supports daily verification, immediate results, and eliminates un-needed calibrations.
- +/- 1% Indicated Value Accuracy from 5% to 100% of capacity.
- Units of measure include English, Standard International, and metric.
- Easy to read backlit color display.
- USB for both power and data transfer to PC.
- Easy programming via our button control panel.
- Meets or exceeds ASME B107.300-2010
- Includes FREE calibration certificate from our ISO/IEC 17025 Accredited Laboratory.
- Rugged protective case and power supply included
- Savings in calibration fees can pay for tester in less than a year.

### All VeriTorg<sup>®</sup> 2 Digital Torque Testers Include:

- 100 VAC or 240 VAC to 5 VDC Power Adapter
- USB A to USB Micro B Cable
- Custom Plastic Carrying/Shipping Case
- Standard Socket(s)
- Quick Start Instructions
- 1-Year Warranty on Electronics
- Includes FREE certification from our ISO/IEC 17025 Accredited calibration laboratory.

Part No.	Model	Transducer Input	Capacity
SRT 12010	VeriTorg <sup>®</sup> 2-1	1/4" Male Hex Drive	5-240 in oz / 1.7 Nm
SRT 12011	VeriTorg <sup>®</sup> 2-8	1/4" Male Hex Drive	5-100 in lb / 12 Nm
SRT 12012	VeriTorg <sup>®</sup> 2-25	10 mm Female Hex	25-300 in lb / 34 Nm
SRT 12013	VeriTorg <sup>®</sup> 2-300	1/2" Female Square	7.5-300 ft lb / 400 Nm
SRT 12014	VeriTorg <sup>®</sup> 2-800	27 mm Male Hex Drive	40-800 ft lb / 1085 Nm

### European Models

Part No.	Model	Transducer Input	Capacity
SRT 12010EU	VeriTorg <sup>®</sup> 2-1	1/4" Male Hex Drive	1.7 Nm
SRT 12011EU	VeriTorg <sup>®</sup> 2-8	1/4" Male Hex Drive	12 Nm
SRT 12012EU	VeriTorg <sup>®</sup> 2-25	10 mm Female Hex	34 Nm
SRT 12013EU	VeriTorg <sup>®</sup> 2-300	1/2" Female Square	400 Nm
SRT 12014EU	VeriTorg <sup>®</sup> 2-800	27 mm Male Hex Drive	1085 Nm

### WARNING



- Do not exceed rated torque
- Do not use to break fasteners loose
- Periodic recalibration is necessary to maintain accuracy
- Read safety precautions on page 61

## Rundown Fixtures

# RDF Series



Rundown fixtures assist in testing the output of pulse, stall and clutch power tools. Neither our testers nor our rundown fixtures are designed or suited for impact tools.

Testing pulse and clutch powers tools are accomplished by allowing the tool to achieve rotational speed prior to torque

measurement. The rundown fixtures all include components to emulate either a hard or medium joint, thus assuring greater test accuracy.

The rundown fixtures work with Torq-Tronics 2 (+/- .5% Indicated Value) and our new System 8 (+/- .25% Indicated Value) Digital Torque Testers.

### Filters and Testing

Both Torq-Tronics 2 and the System 8 digital torque testers have power tool testing filters built. Matching tool capacity, rundown fixture capacity, and the transducer capacity is the basis for creating accurate test results.

Part No.	Model Designation	Description	Drive Size
10349	RDF 1 Nm	Rundown Fixture, 1 Nm/10 in lb capacity	1/4" Female Hex
10350	RDF 3 Nm	Rundown Fixture, 3 Nm/25 in lb capacity	1/4" Female Hex
10351	RDF 6 Nm	Rundown Fixture, 6 Nm/50 in lb capacity	1/4" Female Hex
10352	RDF 17 Nm	Rundown Fixture, 17 Nm/150 in lb capacity	3/8" Female Hex
10353	RDF 34 Nm	Rundown Fixture, 34 Nm/300 in lb capacity	3/8" Female Hex
10354	RDF 34 Nm	Rundown Fixture, 34 Nm/300 in lb capacity	1/2" Male Square
10355	RDF 68 Nm	Rundown Fixture, 68 Nm/600 in lb capacity	1/2" Male Square
10356	RDF 109 Nm	Rundown Fixture, 109 Nm/960 in lb capacity	1/2" Male Square
10357	RDF 204 Nm	Rundown Fixture, 204 Nm/1800 in. lb. capacity	1/2" Male Square
10358	RDF 339 Nm	Rundown Fixture, 339 Nm/3000 in. lb. capacity	3/4" Male Square

### WARNING

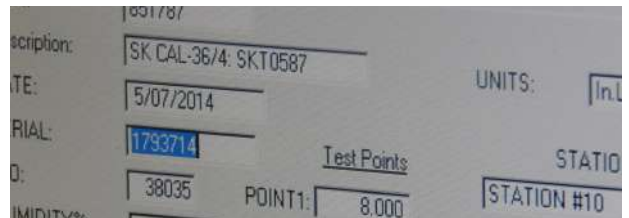


- Do not exceed rated torque
- Do not use to break fasteners loose
- Periodic recalibration is necessary to maintain accuracy
- Read safety precautions on page 61

## Torque Tool Manager Software

# TTM 4.0

### Calibration & Certification Software



Torque Tool Manager 4.0 (TTM 4.0) is calibration and certification software specifically engineered to work with our System 8, Torq-Tronics 2 or your legacy System 4/5, System 6, or Torq-Tronics Digital Torque Testers!

TTM 4.0 software will fulfill your TS 16949 and ISO calibration requirements far more cost-effectively than manual record keeping systems!

- Choose from standard calibration routines or customize your own to assure proper test procedures and accuracy - every time! TTM is flexible; it accommodates the full range of manual and power torque tools.
- TTM 4.0 error-proofs calibration procedures and virtually eliminates retesting due to operator error! TTM 4.0 downloads the proper test protocol to your SR tester and sets the tester up for the tool. It will only accept results that are in line with the test protocol, so errors resulting from failure to follow the programmed procedure are automatically rejected.
- TTM 4.0 keeps records for each tool, including calibration date, serial number, tester and transducer serial numbers, operator, "As Found" and "As Left" test results, NIST traceability numbers, and all other data required for ISO and QS compliance!

**Order the TTM 4.0 using part number 10599.**

Contact customer service via email at [customerservice@sr torque.com](mailto:customerservice@sr torque.com)

# Mechanical Loaders **ML Series**

A mechanical loader is the perfect accessory to increase the repeatability and productivity of the System 8 or legacy System 4/5/6! The drive system for each loader assures 90 degree load application, reducing operator-induced test error. The loaders' mechanical advantage reduces the operator effort required to attain and sustain torque during the calibration process. The QC Series transducers include adapter plates for use with the ML 1000 and ML 2000 loaders, and make changeover a matter of seconds. SR mechanical loaders meet or exceed requirements for ASME B107.29M Type 1 loaders.

The Quad Plate permits mounting up to four transducers to the ML 250 or ML 600 to facilitate changeover. When coupled with the Transducer Switch Module both mechanical and electrical changeover can be accomplished in seconds!



## Mechanical Loaders & Tester Accessories

Part No.	Model Designation	Description
10168	ML 2000	Mechanical Loader, 2000 ft.lb./2710 Nm capacity
10167	ML 1000	Mechanical Loader, 1000 ft.lb./1355 Nm capacity
10431	ML 600	Mechanical Loader, 600 ft.lb./813 Nm capacity
10160	ML 250	Mechanical Loader, 250 ft.lb./338 Nm capacity
10208	Lg. Cart	Roller Cart for ML 1000, 64"W x 30"D x 30"H
10161	Std. Cart	Roller Cart for ML 250, 46"W x 24"D x 46"H
10308	Quad Plate	Rotating plate attaches four -P Transducers to ML 250.
10601	Switch Box	Electrically connects four transducers to System 8

### **WARNING**



- Do not exceed rated torque
- Do not use to break fasteners loose
- Periodic recalibration is necessary to maintain accuracy
- Read safety precautions on page 61

# SR Product Warranties

## Warranty

Sturtevant Richmond Division of Ryeson Corporation warrants all products in this catalog against defective material and workmanship for the periods given in the table. Upon inspection, Sturtevant Richmond shall have the option to repair or replace the defective product and such repair or replacement, free of charge, shall be the Customer's sole and exclusive remedy. Sturtevant Richmond Division of Ryeson Corporation furnishes this limited warranty in lieu of all other warranties, express or implied, including warranties of merchantability and fitness for a particular purpose. Any and all warranties shall be void as to products damaged or rendered unserviceable while in the custody of the customer or third parties. This includes but is not limited to negligence, misuse, modification, repair or alteration of the product.

**Please note: Use only NiMH 1.25 volt rechargeable batteries in your test instruments. Using 1.5 volt alkaline disposable batteries will damage your test instrument or create inaccurate readings, damage your torque testing/calibration instrument and VOID your warranty.**

## Product Family Warranty Duration (from date of purchase)

Torque Transducers	1 year
Torque Testers	1 year
Mechanical Loading Systems	5 years
Calibration Arms	5 years
Load Platforms, Weights	5 years
Calibration	90 days
Software	90 days
All other products	1 year

## Power Tool Warranty

Power Tool	1 year
Charger	1 year
Battery	3 months

## Liability

Sturtevant Richmond Division of Ryeson Corporation shall not be liable for any damages, incidental, consequential, or otherwise, or commercial loss from any causes, nor for personal injury or property damage. Sturtevant Richmond Division of Ryeson Corporation's liability is limited to the repair or replacement of defective material or workmanship of the product.

## Factory Repair & Calibration

Torque wrenches, torque screwdrivers, torque testers – all are precision measurement instruments. You rely on each to assure the quality of your products, which means that tool and tester uptime and calibration are critical to your business.

We offer our customers factory-quality repair using original SR parts, and calibration in our ISO/IEC 17025 Accredited Laboratory. There is no better level of repair available anywhere, and you can rely on our calibration process to assure you are working with accurate tools and testers.

Contact us by phone, fax, or e-mail to discuss your repair and calibration needs for all SR products.

World wide: +1 847-455-8677  
In US only, toll-free: 800-877-1347  
Fax: 847-455-0347  
email: [customerservice@srtorque.com](mailto:customerservice@srtorque.com)

## General Information

### Certification

All SR torque testers, torque wrenches (except dial wrenches and preset tools) and torque screwdrivers are certified in our ISO/IEC 17025:2005 A2LA accredited laboratories.

### Specifications and Dimensions

All specifications and dimensions contained in this catalog are subject to change without notice. Please contact the factory for the latest information.

## Safety

### Torque Testers



• Calibration weights can cause tester and its base to tip

**Wear safety goggles (users and bystanders).**

**Counterbalance or anchor mounting base.**

*Tipping base can cause injury.*

## Torque Wrenches



- Overtorquing can cause breakage
- Wrench can break while breaking fasteners loose
- An out-of-calibration torque wrench can cause part or tool breakage

**Wear safety goggles (user and bystanders).**

**Do not exceed rated torque.**

**Do not use a torque wrench to break fasteners loose.**

**Periodic recalibration is necessary to maintain accuracy.**

*Broken tools can cause injury.*

ISO/IEC 17025 Accredited  
calibration laboratory.



ISO 9002 Registered August 19, 1994  
ISO 9001 Registered May 8, 2001  
ISO 17025 Accredited October 23, 2003

★ Headquarters

● Sales Offices

● Sales Representatives

● International Distributors

Sturtevant Richmond U.S.  
Distributors cover all 50 states



**Sturtevant  
Richmont**

555 Kimberly Drive, Carol Stream, IL 60188 USA

Worldwide +1 (847) 455-8677  
U.S. Toll-free: +1 (800) 877-1347  
Fax: +1 (847) 455-0347  
Email: [customerservice@srtorque.com](mailto:customerservice@srtorque.com)

[www.srtorque.com](http://www.srtorque.com)

© 2021 Sturtevant Richmond. All rights reserved.



## Accurate. Reliable. Durable. TOOLS YOU TRUST.

Sturtevant Richmond is a leader in the torque tool industry starting with the very first torque wrench invented in 1924. Today, we manufacture manual, digital and wireless torque wrenches, screwdrivers, robust calibration and test equipment, and wireless torque monitors and controls for organizations that need to apply accurate, precise torque to their manufacturing, maintenance and repair operations.

Made in the USA by highly experienced and capable hands.

Visit our new website



LIT-360 A 042324